

# Archival Studies Praxis and Projects 2025

Departure and homecoming: Tradition may constitute a point of departure for creation, but never a home to come back to.

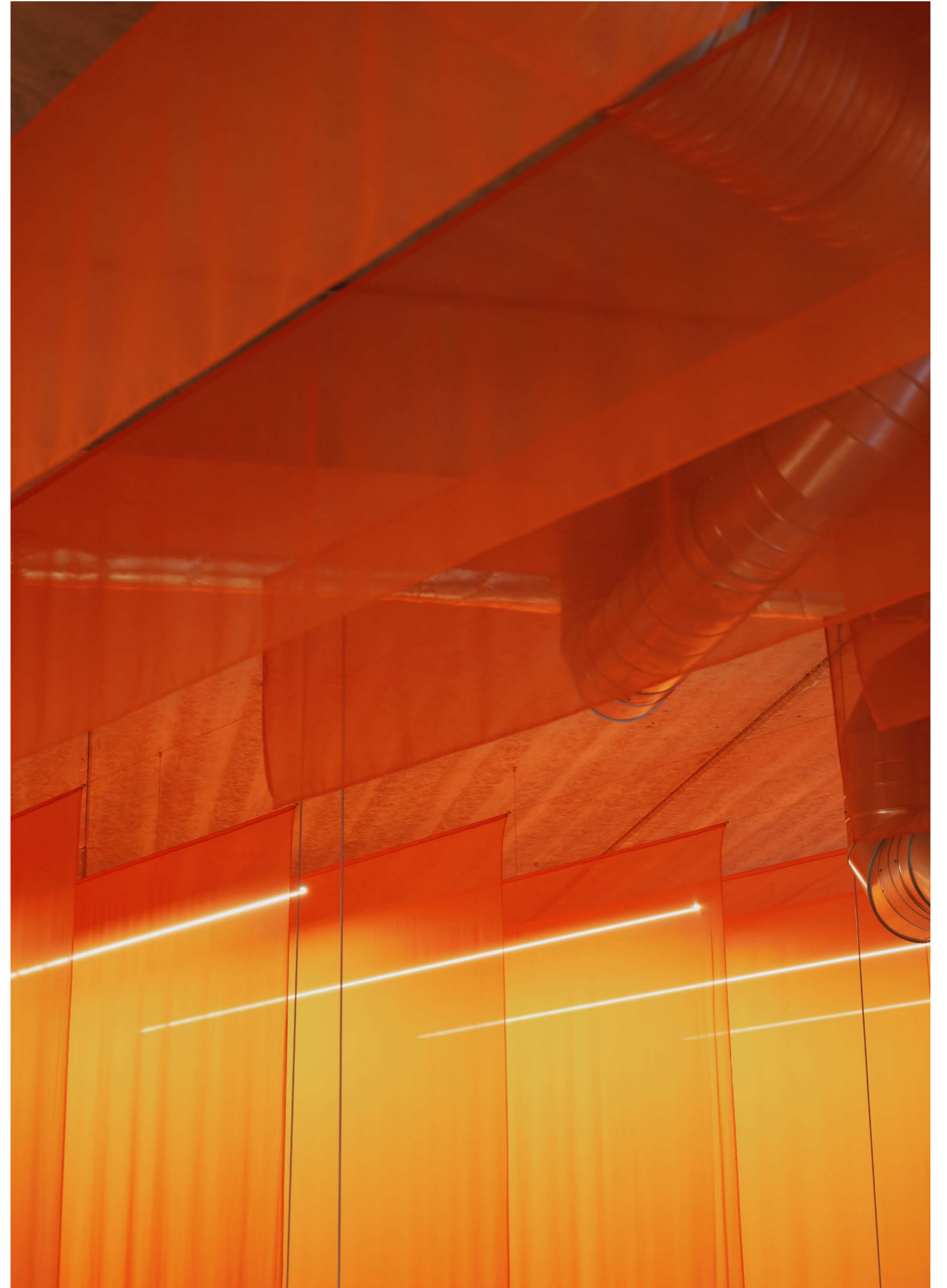
— Kazuo Shinohara

# ARCHIVAL STUDIES

Archival Studies is a Copenhagen-based design practice that explores interior architecture for transformation and care of the existing.

We actively engage with a network of partners, collaborating with private, public, and commercial clients, to apply regenerative concepts, flexible building systems, and sensory-rich environments.

Our potential lies in our focus on craftsmanship and production. We strive to inspire new standards for materials and shape a contemporary definition of architecture that addresses the numerous challenges our planet faces today.



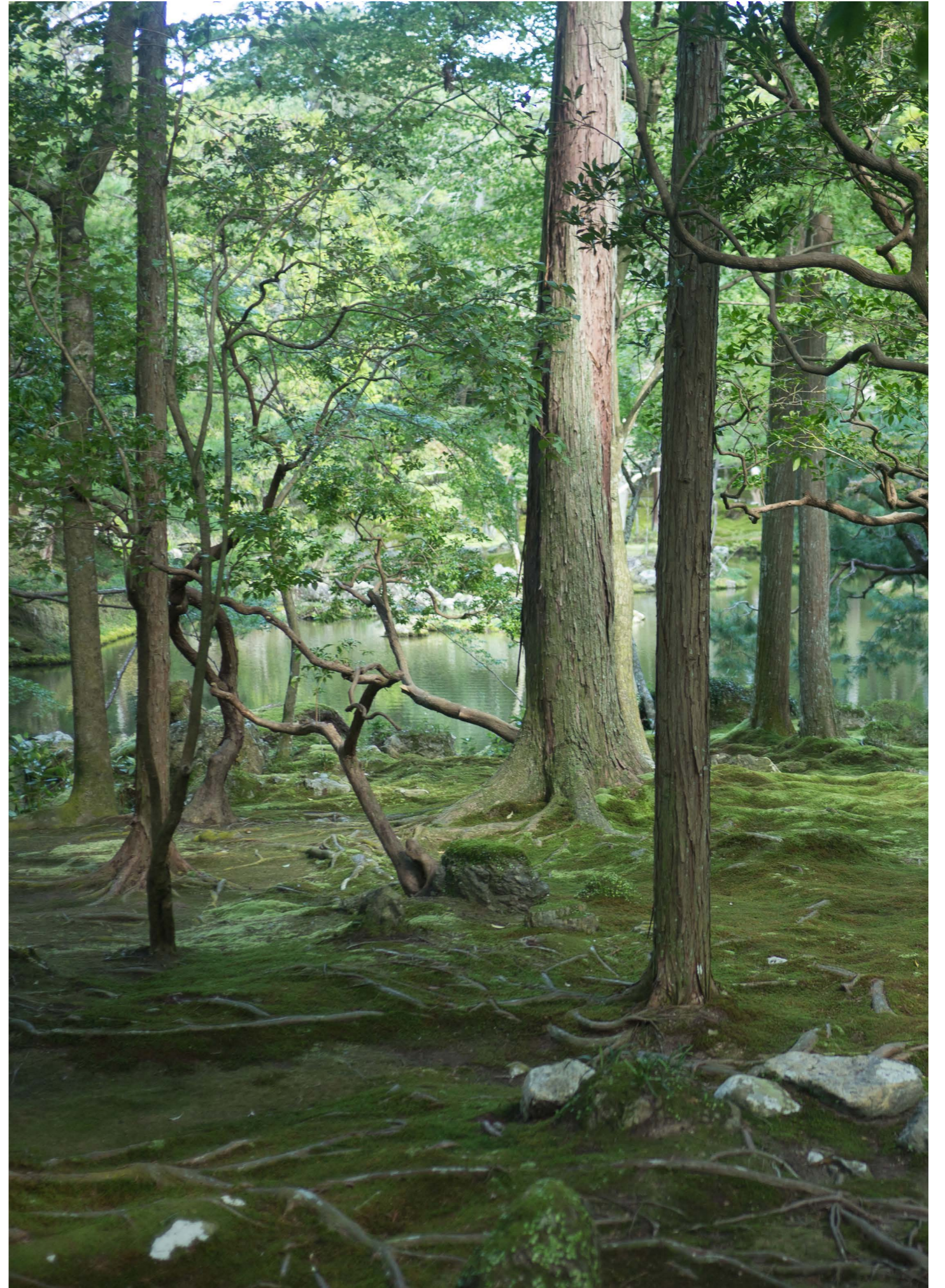
## STATEMENT

As our name implies, we begin each process by understanding the already existing. We do this in order to 'design as little as possible', letting patterns of life frame and direct our work.

Each project begins by understanding the essential qualities of the client, space, and users that we are engaging with.

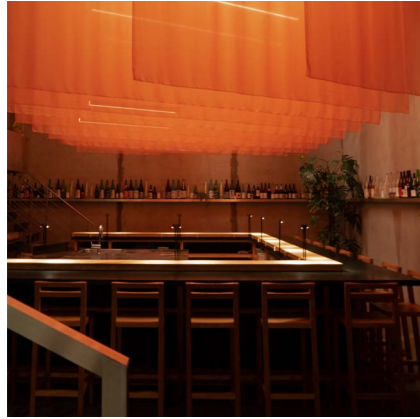
We work with these with the ambition to help places feel truly alive. This aliveness often grows out of patterns of history and culture and these are our roots for transformation and care of the existing.

Places where life can unfold organically.



# SPACES

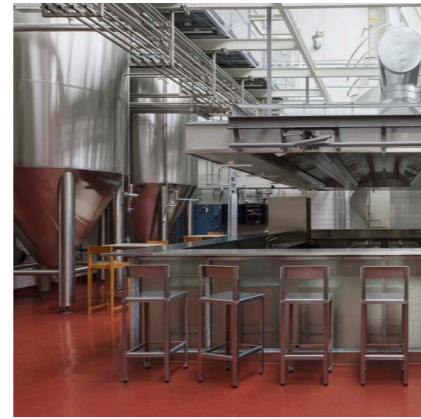
## HOSPITALITY SPACE



Kōnā  
Restaurant, 2020

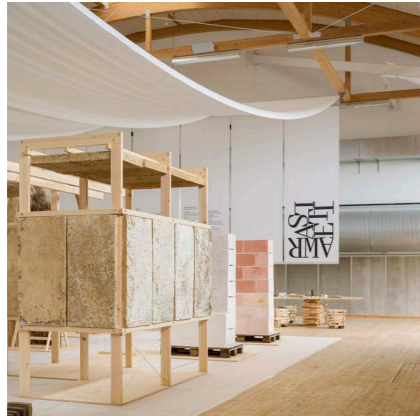


Gasoline Grill  
Restaurant, 2021

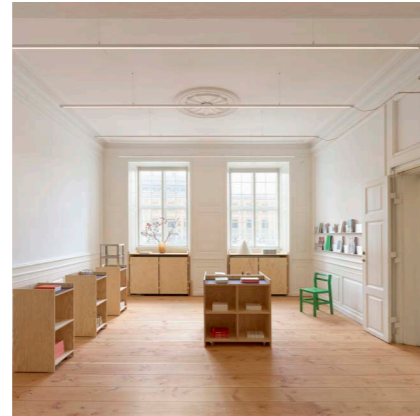


Åben Kødbyen, Furnishing design  
Project by Pihlmann Architects, 2022

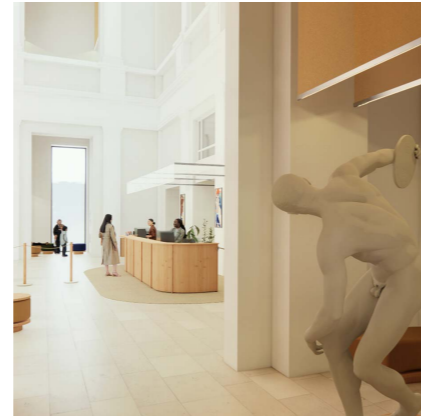
## CULTURAL SPACE



Reset Materials  
Exhibition Design, 2023



Gammel Strand Kiosk  
Interior, 2024



SMK Welcome Desk, Entrance hall  
Interior, ongoing

## COMMUNITY SPACE



Spor10  
Interior, Social activation, 2023



Vores Sted  
Interior, ongoing

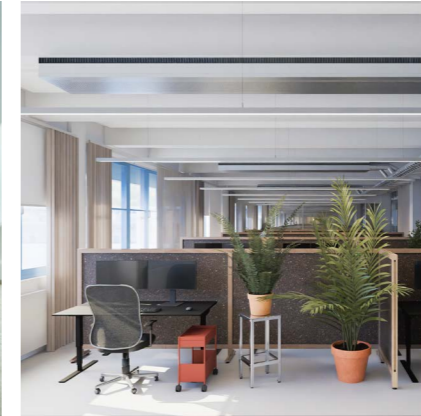


Syd for Solen Festival  
Pavilion and bar, 2024

## WORK SPACE



Refshaleøen Ejendomsselskab, Office  
Furnishing design, 2021



Playdead, Office  
Interior, ongoing



Trifolium, Office  
Interior, ongoing

## RETAIL SPACE



Frama, Shop-in-Shop System  
Tailored display system, ongoing

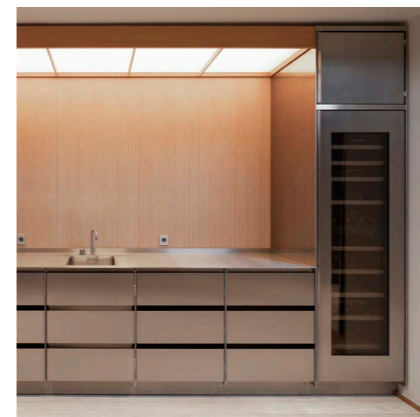


Rockfon, Display System  
Repurposable display system, 2023

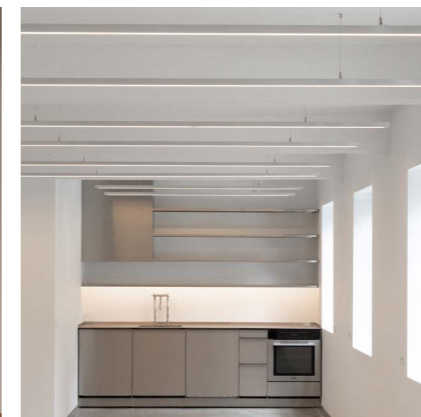


D Line, Display System  
Repurposable display system, 2024

## SYSTEMS AND PRODUCTS



Standard Kitchen System  
2024



Linear Light System  
2022



Alu Furniture System  
2023

# Selected Projects

## EXHIBITION 05 \_ RESET MATERIALS

Archival Studies was commissioned to plan and execute the design of the exhibition Reset Materials, seamlessly connecting the showcased material solutions into a cohesive layout and language. The layout of the space is intentionally designed as a cityscape, mirroring the applications of the featured pieces within the architectural realm. Highways, streets, and pathways wind through the exhibition's high-rises, monuments, arcs, and squares, enabling close engagement with the displayed items and offering a layered landscape that as a window into a potential future.

A crucial element of the design concept was minimizing waste. All materials were maintained at their standard sizes, avoiding the need for cutting or modification. This approach ensured that all exhibition materials could be repurposed once the show concluded.

PROJECT TYPE: Exhibition Design  
CLIENT: Akademisk Arkitektforening, Copenhagen Contemporary  
LOCATION: Tivoli Gardens, Copenhagen, DK  
DATE: 2021  
PHOTOGRAPHY: Hampus Berndtson









Archival Studies



@archival\_studies

archivalstudies.net

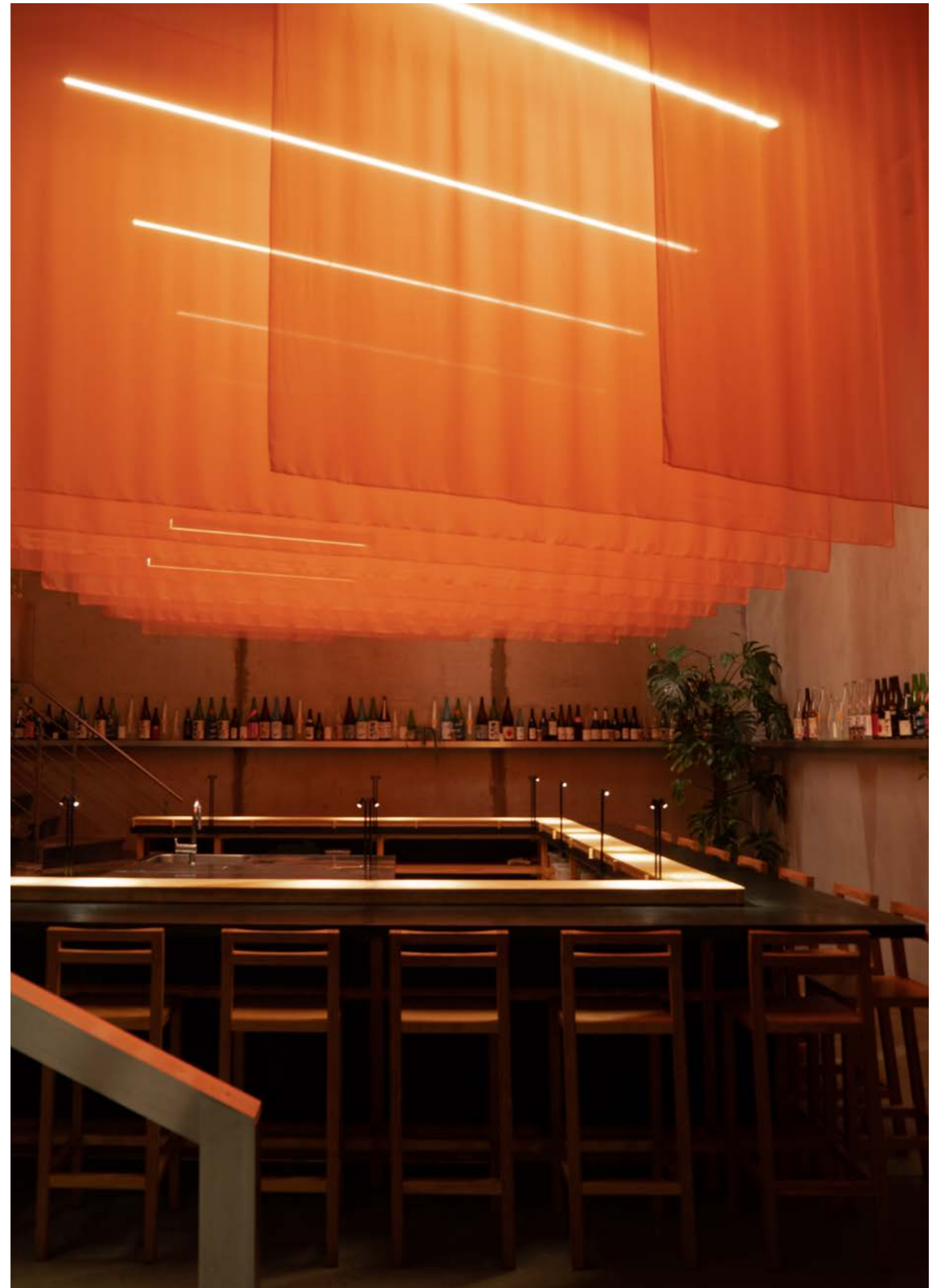


## INTERIOR 06 \_ KŌNĀ

The interior of Kōnā comprises two distinct spaces. Upon arrival, guests step into the inviting and cozy Izakaya, featuring a gently draped textile ceiling that exudes a tranquil atmosphere. Descending the stairs to the lower floor, a striking transformation unfolds as the expansive Omakase Bar space envelops them.

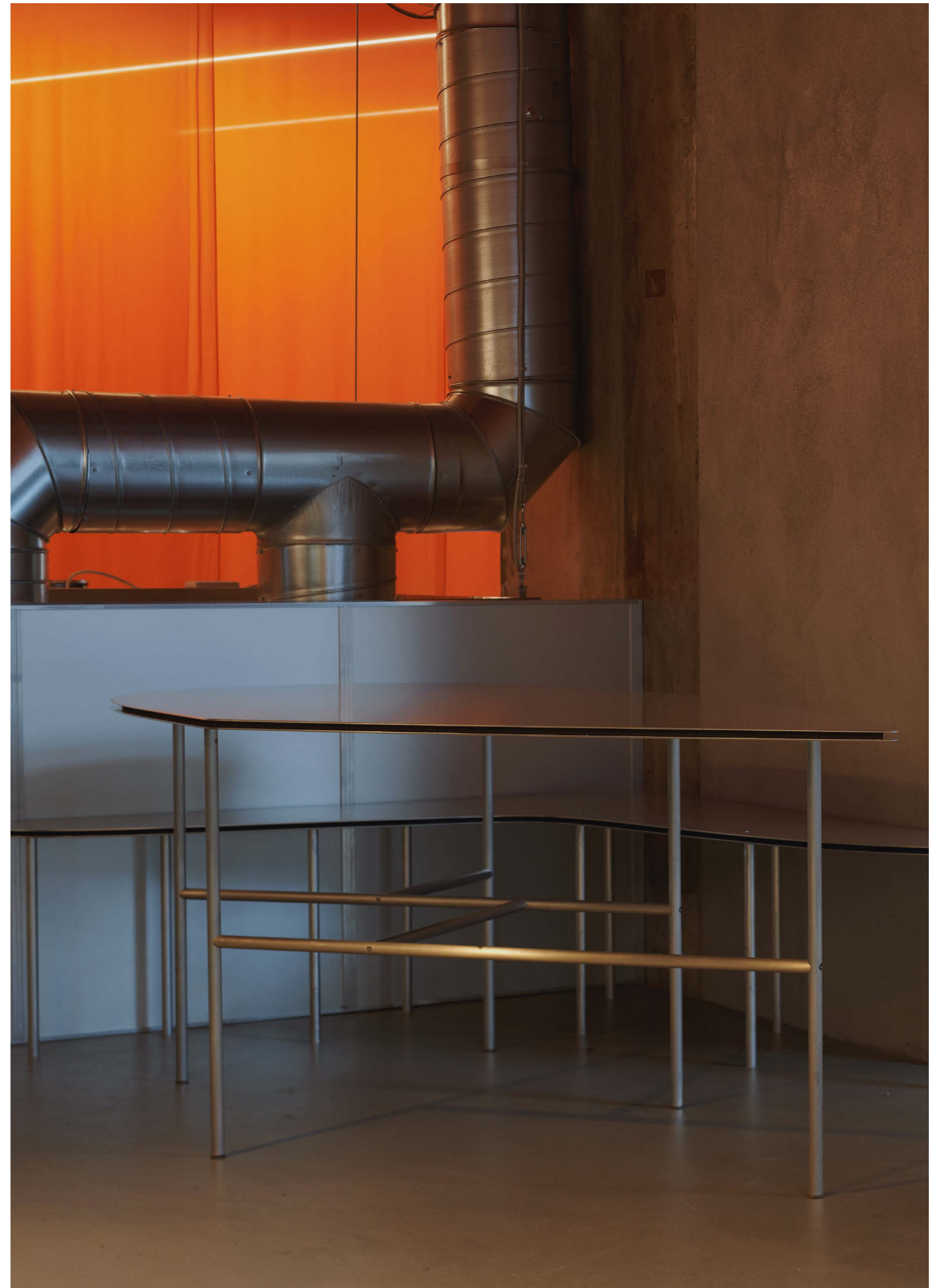
From furnishings and lighting to textiles and wayfinding, each element was thoughtfully designed and impeccably produced in-house.

PROJECT TYPE: Restaurant Interior  
CLIENT: Philipp Inreiter and Carlsberg Byen  
LOCATION: Copenhagen, DK  
DATE: 2020  
PHOTOGRAPHY: Niklas Adrian Vindelev / Archival Studies





Archival Studies



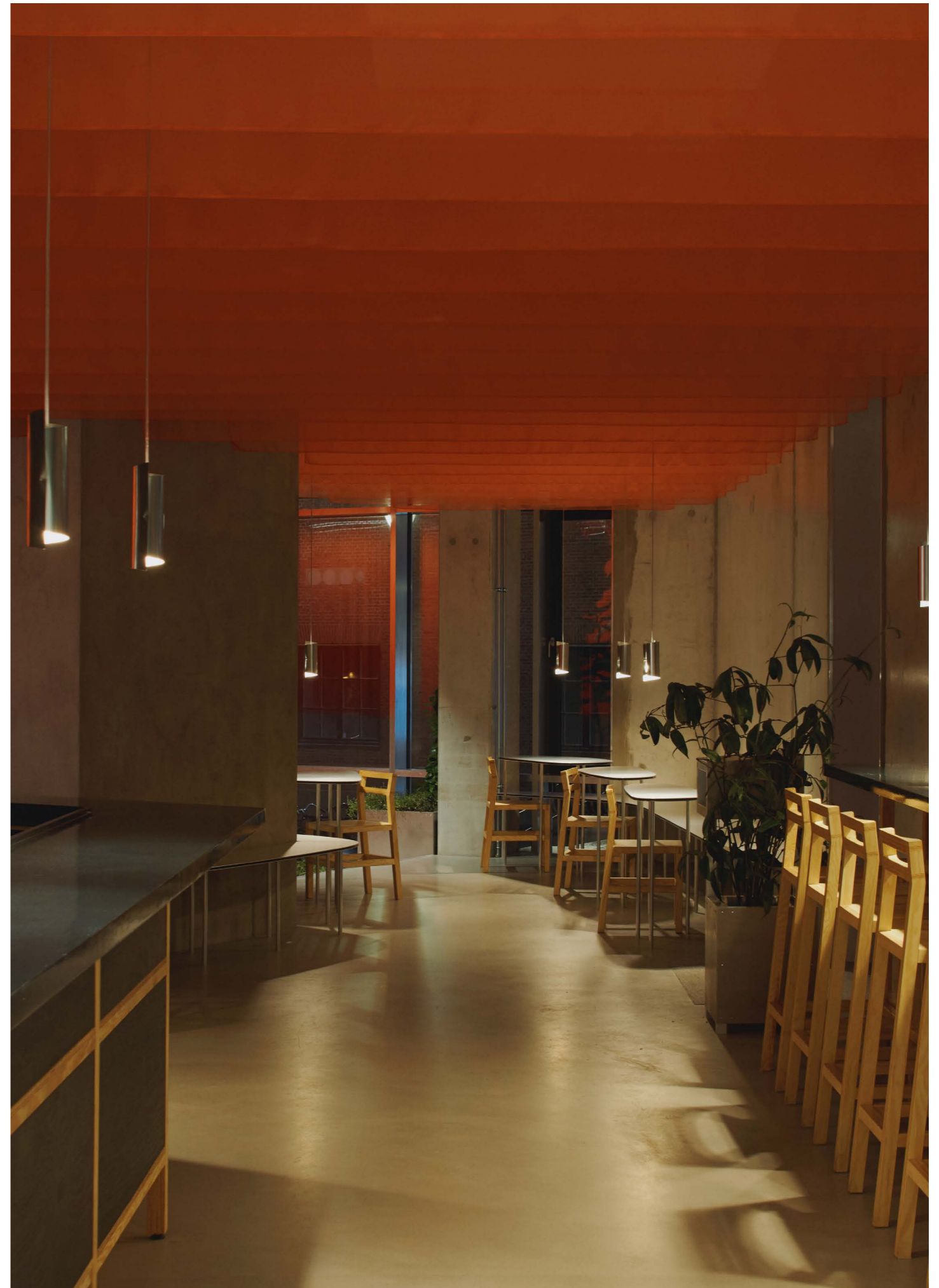
@archival\_studies

archivalstudies.net





Archival Studies



@archival\_studies

archivalstudies.net

## INTERIOR 14 \_ GAMMEL STRAND SHOP

As an integral part of Gammel Strand's ongoing remodeling, Archival Studies envisions and rolls out the art center's physical transformation.

Located in a historical building dating back to the 1750s, the spatial redesign is approached with consideration to the architectural heritage, to create a genuine space open for ample opportunities.

The spatial transformation is focused on recovering the original space, utilizing existing resources to make room for a new identity and improved wayfinding. Layers of added interiors were stripped away, making room for the classical architecture to breathe. The restored wooden floorboards and exposed walls unfold the room to an inviting space, that offers the art center a platform to unfold as a lively cultural house.

PROJECT TYPE: Retail, Interior  
CLIENT: Gammel Strand  
LOCATION: Copenhagen, DK  
DATE: 2024  
PHOTOGRAPHY: Hampus Berndtson

Archival Studies



@archival\_studies

archivalstudies.net

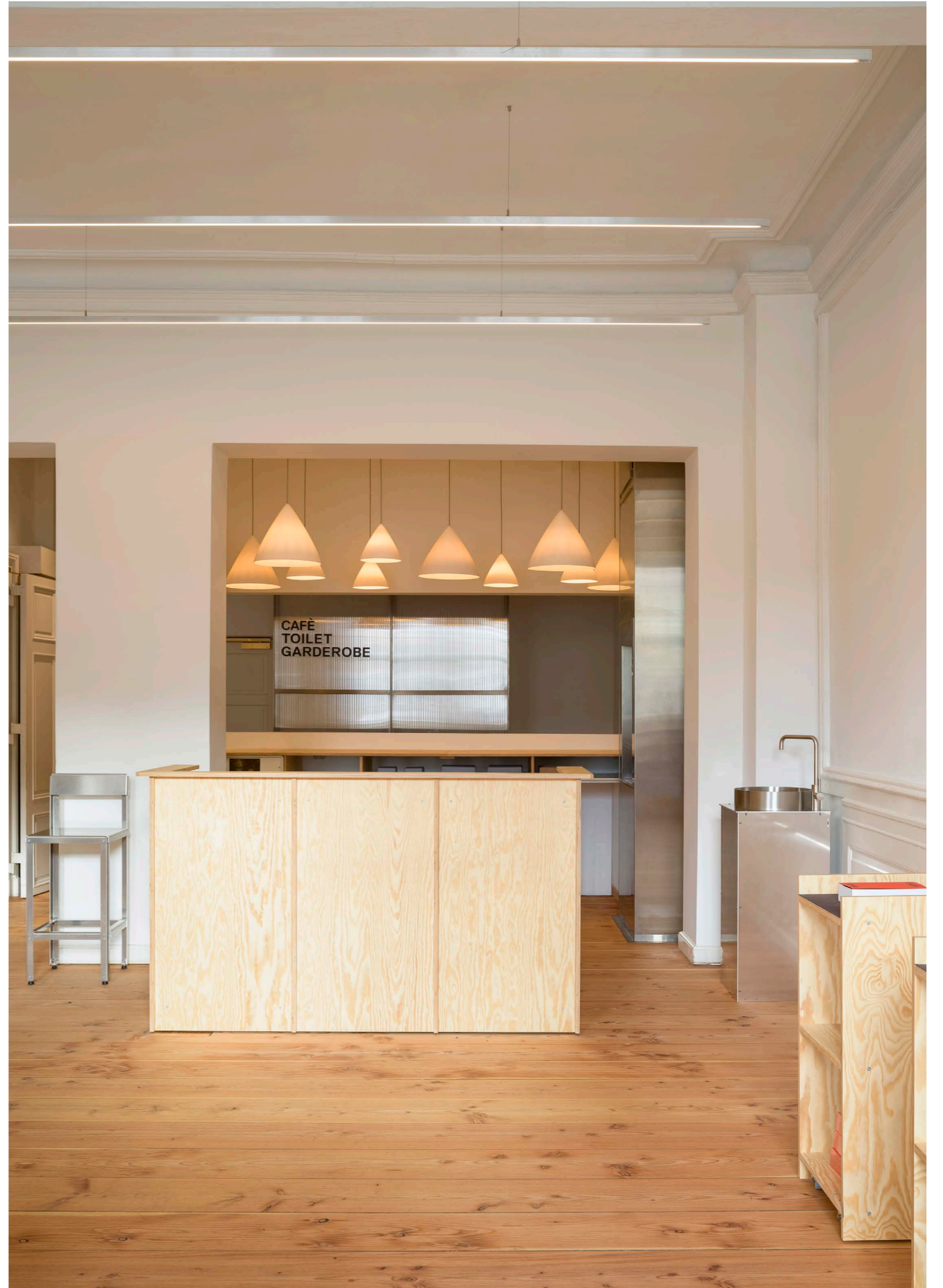








Archival Studies



@archival\_studies

archivalstudies.net



## SYSTEM 03 \_ D LINE

Aligning with d line's principles of timeless and long-lasting design, Archival Studies have developed a new display system for the brand's range of architectural hardware products.

Developed to be taken apart and re-assembled for diverse exhibition environments, the modular system responds to the brand's commitment to the reuse and refurbishment of materials. The display system is designed to guide visitors through a curated journey. From discovering brand values to exploring products within their context of use, every module serves a purpose.

The result is a spatial experience that prioritises intuitiveness and accessibility, allowing visitors to experience d line's commitment to design and craft first-hand.

PROJECT TYPE: Retail System, Exhibition System

CLIENT: d line

LOCATION: Copenhagen

DATE: 2024

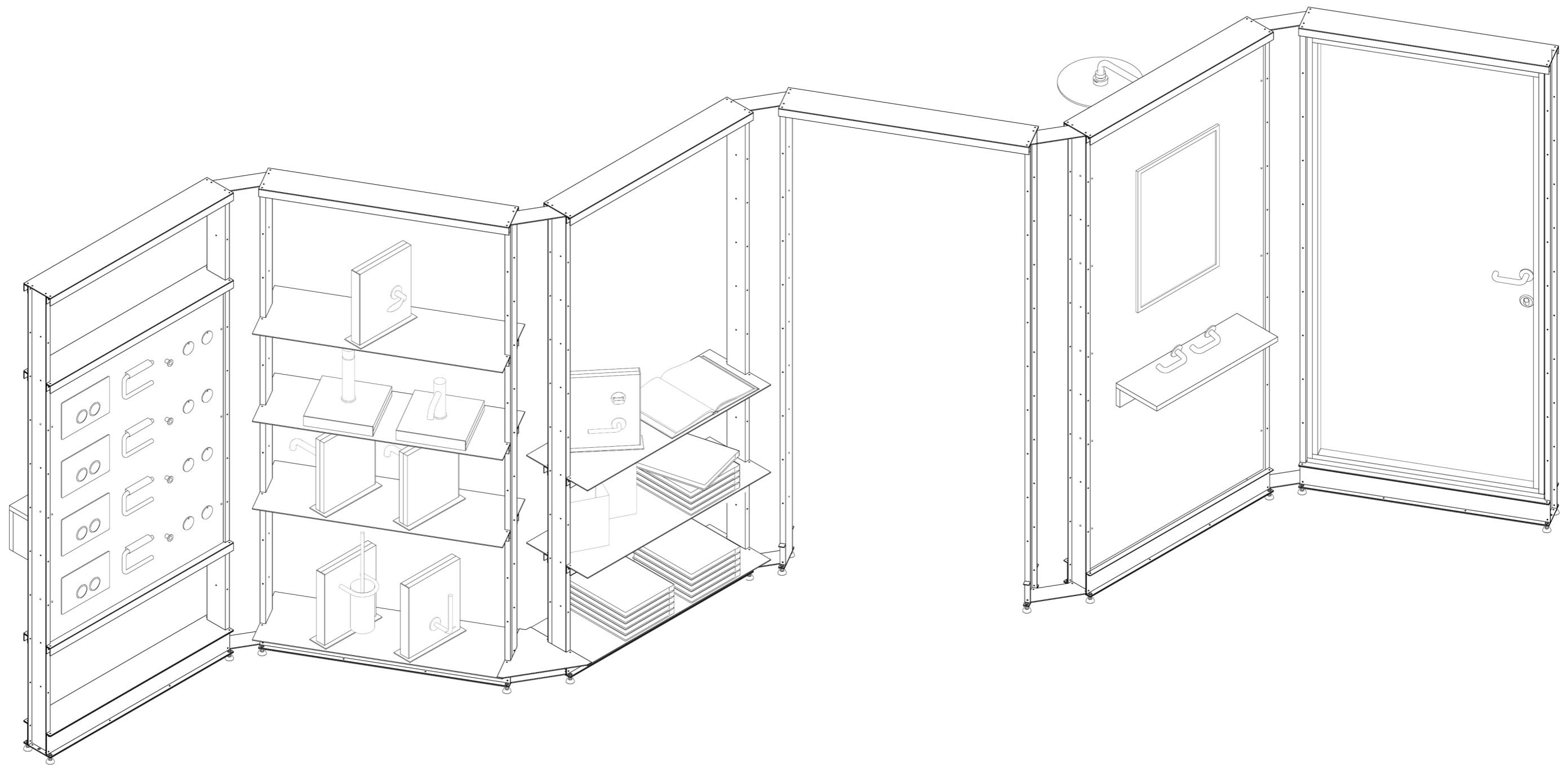
PHOTOGRAPHS: David Stjernholm

Archival Studies



@archival\_studies

archivalstudies.net







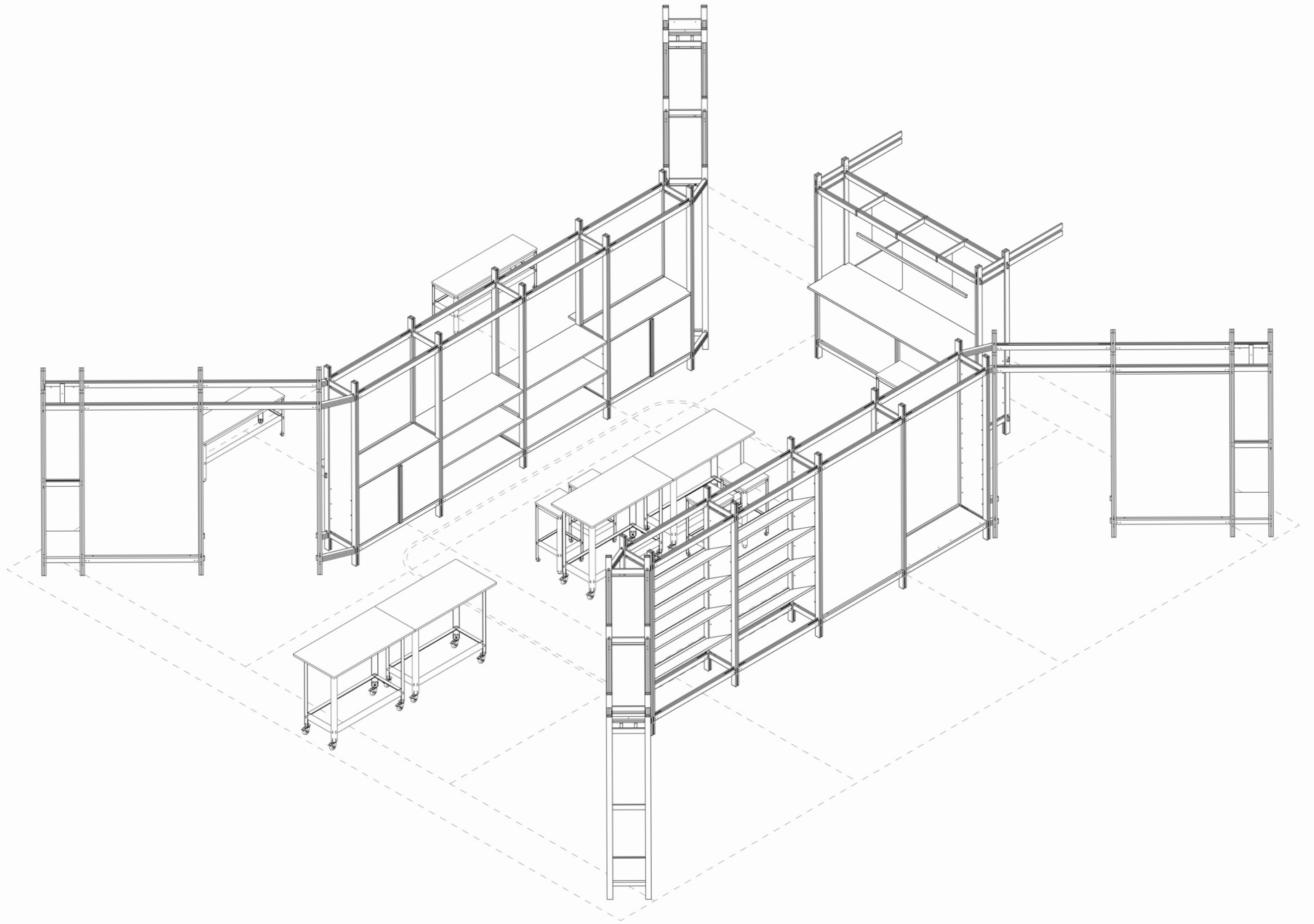
## BUILDING SYSTEM \_ ROCKFON

To showcase their new range of design solutions, Rockfon's modular exhibition system was designed to frame and uplift the products on display. The goal was to provide attendees with a memorable sensory experience, allowing them to immerse themselves in Rockfon's range of design acoustics within a unique environment. Following our two companies' akin approaches to environmental consciousness, the structure of CNC-milled and laminated plywood was designed to be taken apart to travel between exhibitions. This approach aims to minimize waste between events and allows the material to gain character and charm over time. The exhibition system was first implemented at Paris' Workspace Expo in 2023, and has since been repurposed for exhibitions in Amsterdam and Malmö.

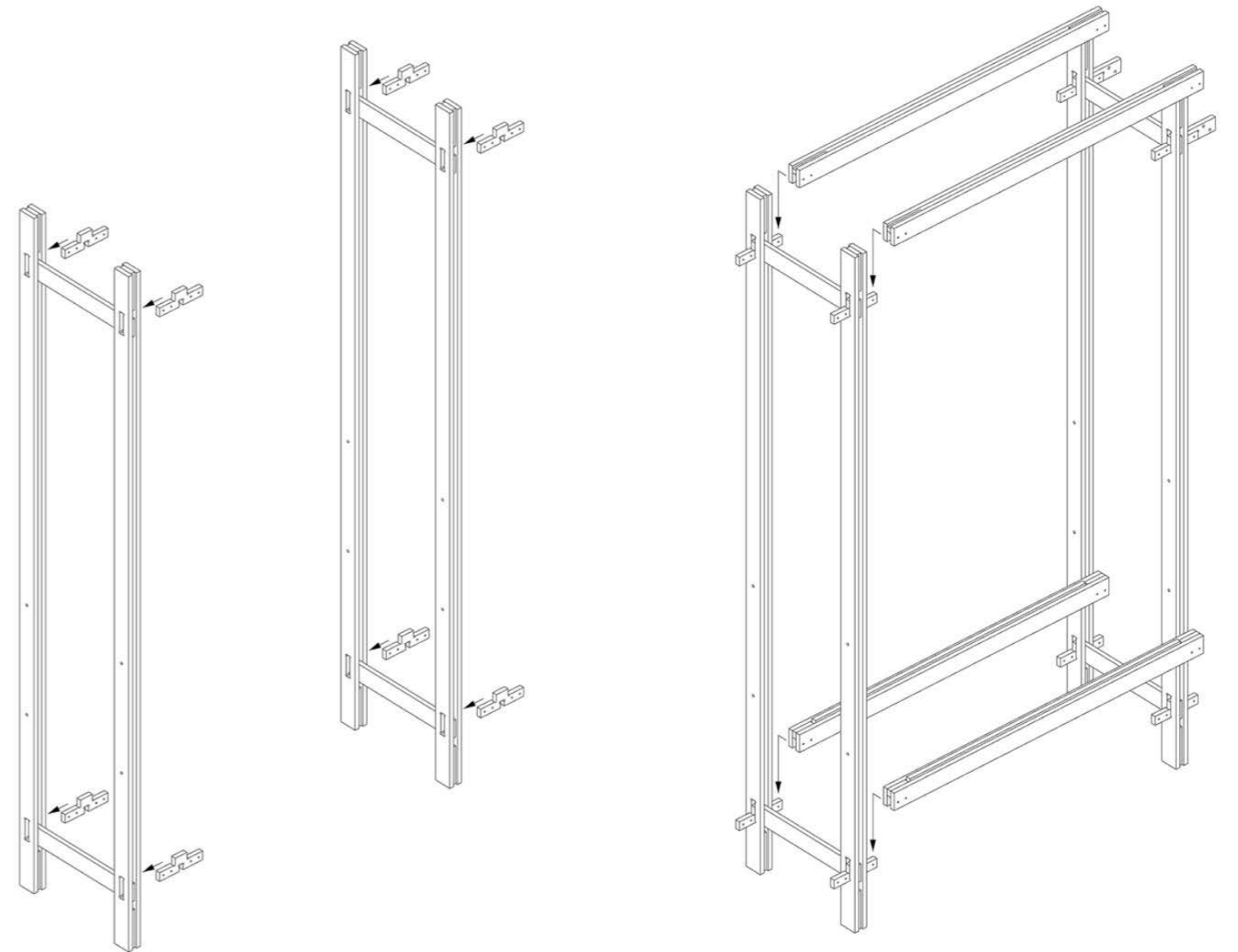
PROJECT TYPE: Modular Exhibition System  
CLIENT: Rockfon  
LOCATION: Paris (FR), Amsterdam (NL), Malmö (SE)  
DATE: 2023–2024  
PHOTOGRAPHY: Studio Brinth













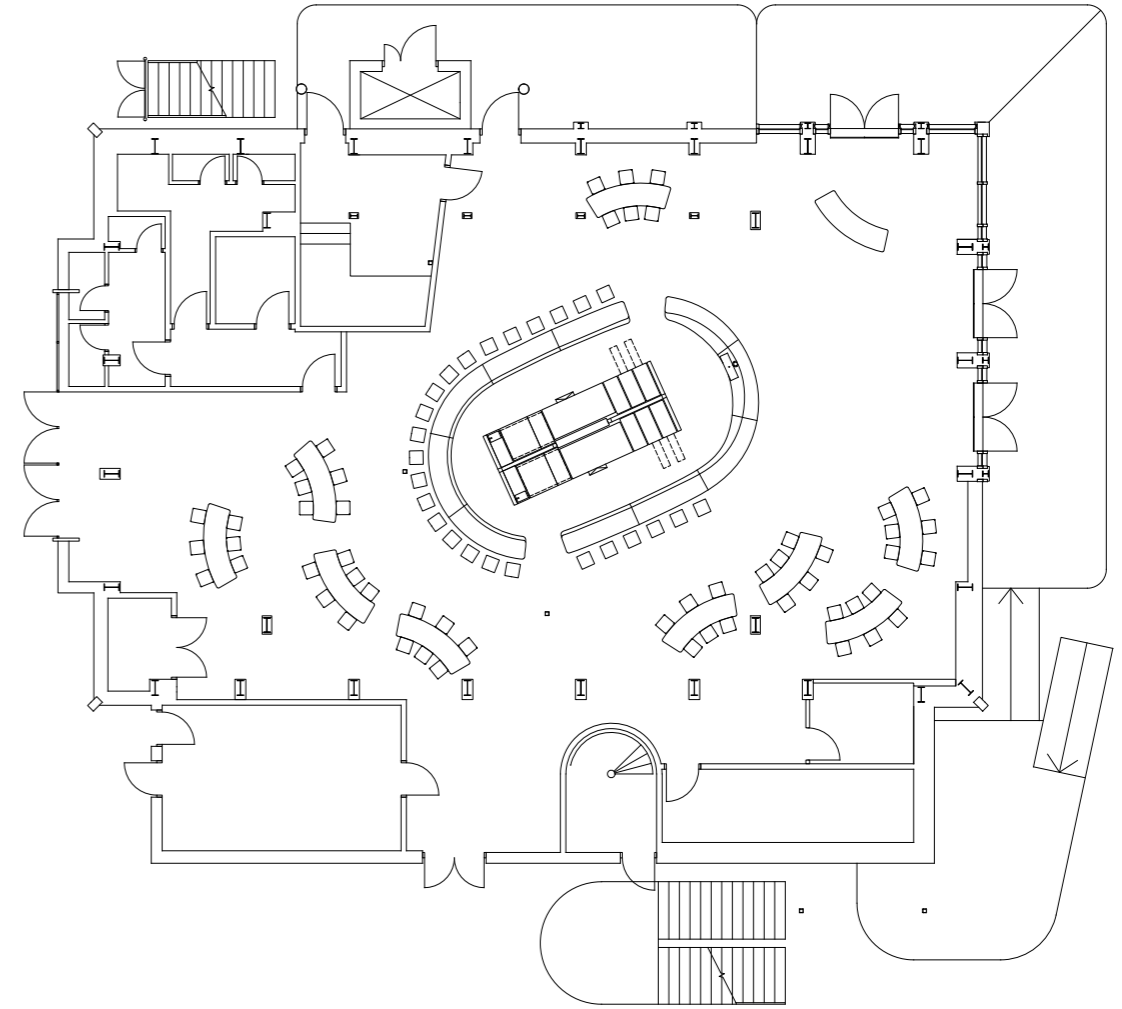
## INTERIOR 07 \_ GASOLINE GRILL

When considering burger culture, the reminiscent drive-in diners of the Western USA emerge, closely intertwined with the automotive industry. As the automotive sector and infrastructure flourished in the USA, so did the burgeon of burger culture. The utilization of metals, curves, and vibrant illumination within certain Gasoline Grill locales evoked the streamlined, industrial, and pragmatic aesthetic reminiscent of those Western USA diners.

A parallel theme that emerged in our musings was the California light and space art movement, occurring simultaneously. These artists, influenced by the burgeoning American industry, particularly the automotive sector, sought to craft experiences rather than objects. Through the manipulation of light, spatial dimensions, and color, they aimed to impact human perception and to allow people to see the world in new ways.

PROJECT TYPE: Restaurant Interior  
CLIENT: Gasoline Grill, Tivoli  
LOCATION: Tivoli Gardens, Copenhagen, DK  
DATE: 2021  
PHOTOGRAPHY: Hampus Berndtson

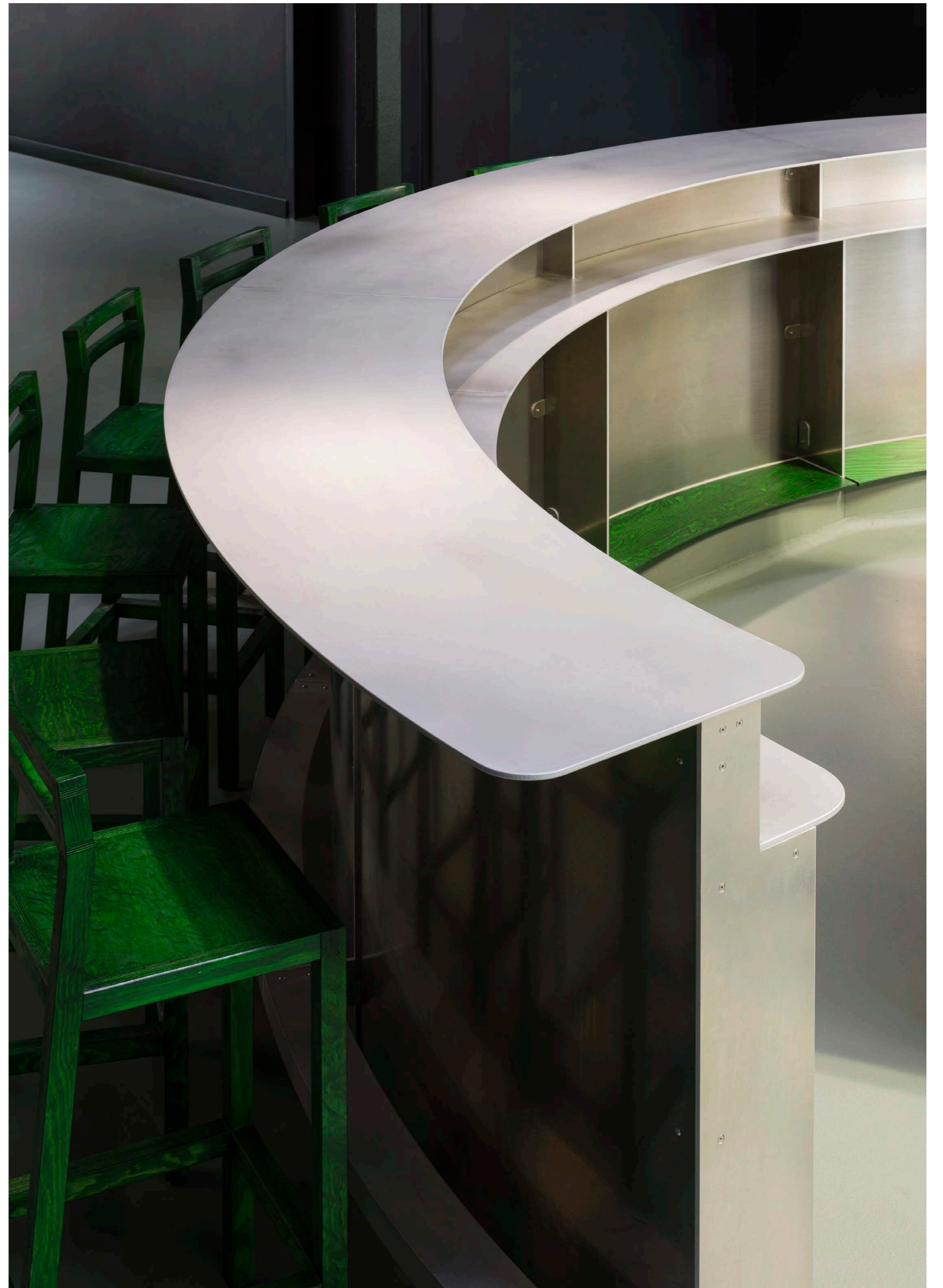








Archival Studies



@archival\_studies

archivalstudies.net



## BUILDING 01 \_ VORES STED

The communal project Vores Sted has been initiated by Realdania on the occasion of their 25th anniversary. Together with Pihlmann Architects, Cobe, Reværk, Rumgehør, Archival Studies has designed four unique meeting places to foster community and sustainability: The Workshop, The Conservatory, The Nature Base, and The Community Roof.

The goal was to create communal spaces with a minimal environmental impact, using recycled, surplus, and biogenic materials. The structures are designed for easy disassembly, ensuring no lasting impact on their sites. By 2026, at least 150 of these meeting places will be established across Denmark, bringing people together in innovative and inspiring ways.

We are honored to be able to contribute to this initiative, promoting local gatherings and strengthening communities.

PROJECT TYPE: Building

CLIENT: Realdania

LOCATION: Denmark

DATE: 2024 - 2026

COLLABORATORS: Pihlmann Architects, Cobe, Reværk, Rumgehør

Archival Studies



@archival\_studies

archivalstudies.net



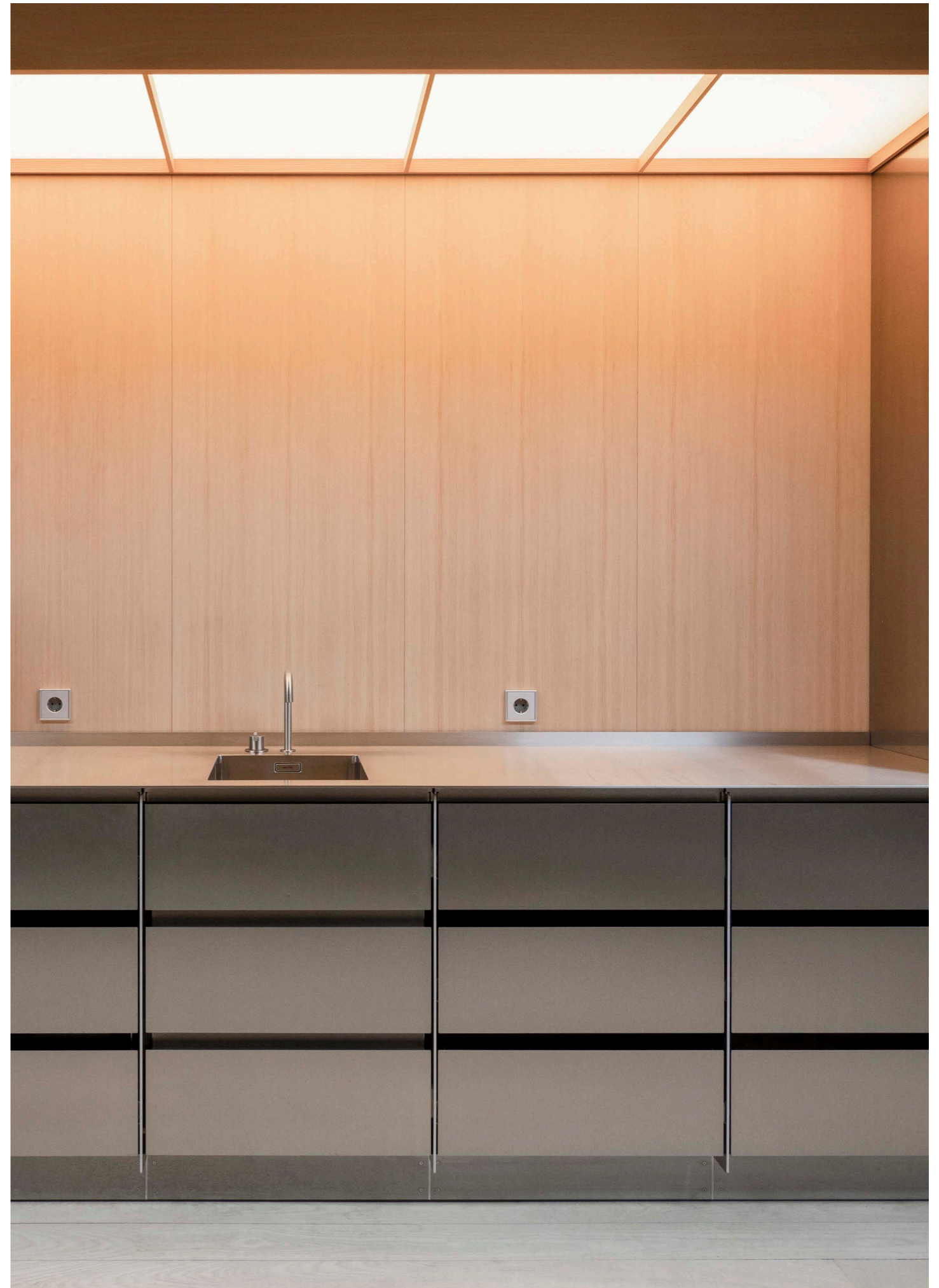


## KITCHEN 11 \_ NORSE PROJECTS

Set into a niche inside one of Holmen's traditional boat sheds, this beverage kitchen is designed to blend into the calm and creative atmosphere of contemporary lifestyle brand Norse Projects' headquarters. In this historical environment, the aluminium and brushed stainless steel surfaces leave a timeless impression. The reflections of the custom light box paint the space in warm and welcoming tones.

PROJECT TYPE: Kitchen  
CLIENT: Norse Projects  
LOCATION: Copenhagen, DK  
DATE: 2023  
PHOTOGRAPHY: Archival Studies

Archival Studies



@archival\_studies

archivalstudies.net





## INTERIOR 05 \_ ART HUB

The transformation of Art Hub Copenhagen points towards a general path for how recycling can be rethought in architecture. When resources are not consumed, but regenerated into value-creating elements, recycling is no longer a necessary evil, but the very catalyst of form and intention.

Collaboration with Pihlmann Architects

PROJECT TYPE: Office Interior  
CLIENT: Art Hub Copenhagen  
LOCATION: Copenhagen, DK  
DATE: 2020  
PHOTOGRAPHY: Hampus Berndtson  
COLLABORATORS: Pihlmann Architects











Archival Studies



@archival\_studies

archivalstudies.net



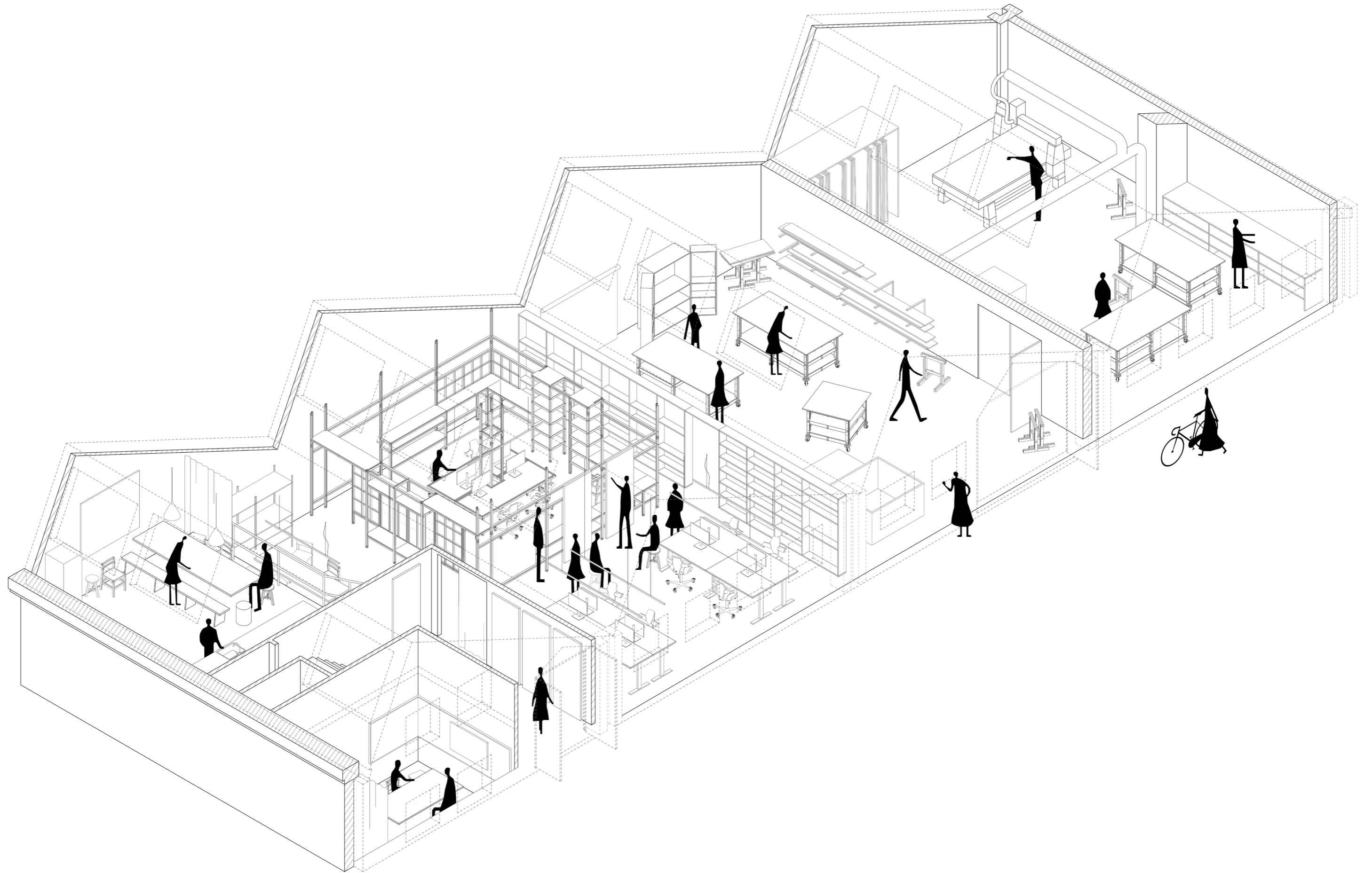
## INTERIOR 11 \_ VÆRKSTEDVEJ 23

Værkstedvej 23 serves as the heart of our architectural practice. Our studio is meticulously crafted to foster inspiration and facilitate meaningful exchanges. Within its walls, we convene to discuss, sketch, model, draw, design, prototype, produce, share meals, and cultivate collective growth.

The place is alive, a dynamic workshop that remains in perpetual motion, embodying a continuous flow of creativity and activity.

PROJECT TYPE: Office Interior  
COLLABORATORS: Dinesen Lab, MSSR Works, Arda Audio  
LOCATION: Copenhagen Valby, DK  
DATE: 2022  
PHOTOGRAPHY: Christian Mayer









Archival Studies



@archival\_studies

archivalstudies.net

## COMMERCIAL CLIENTS

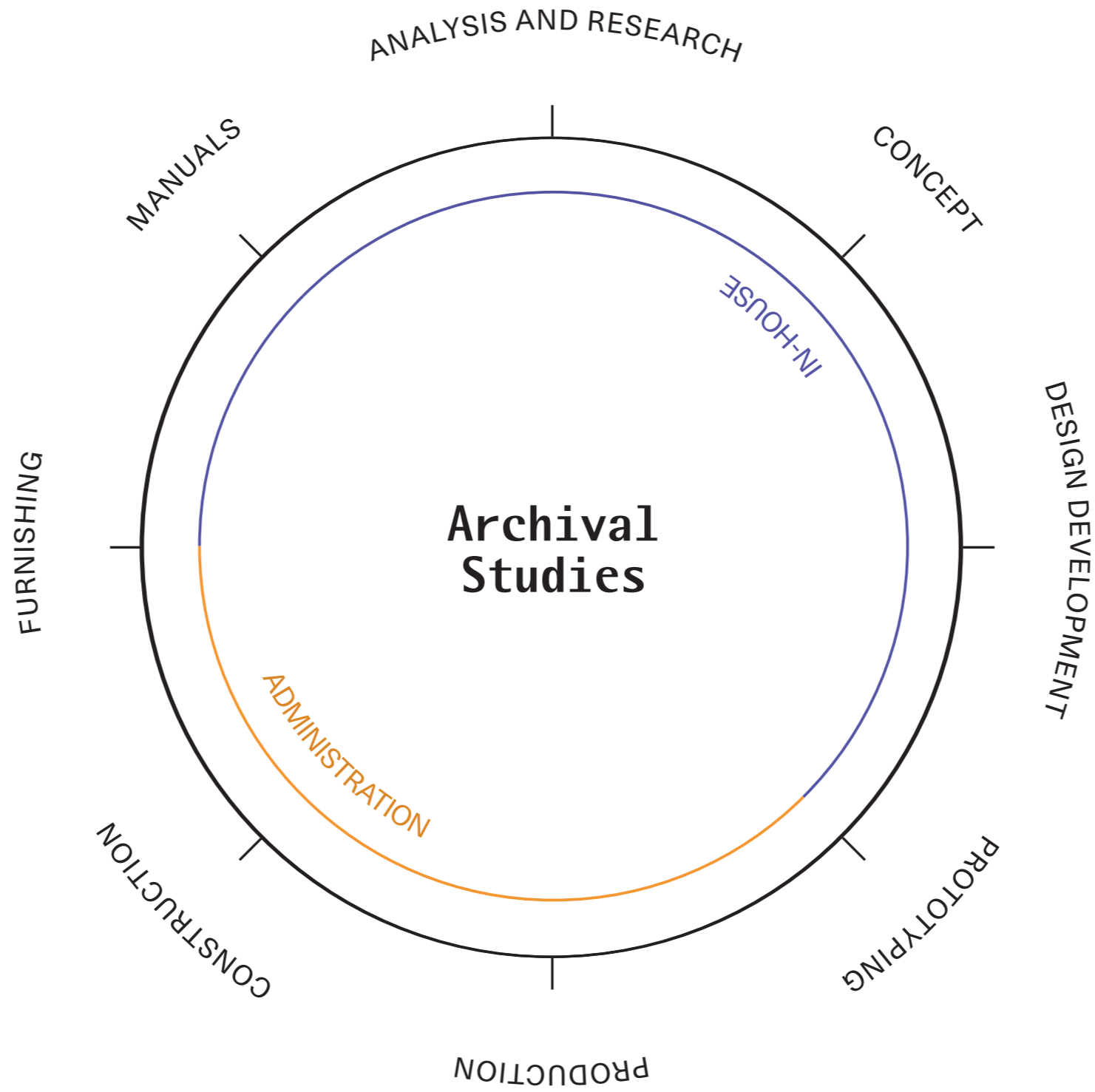
Realdania, SMK, Playdead, Bikubenfonden, Art Hub Copenhagen, Rockfon, Almenr, Carlsberg Byen, Gasoline Grill, FRAMA, Glyptoteket, Norse Projects, d line, Ricardo Bofill, Tivoli Gardens, Kinraden, Refshaleøens Ejendomsselskab, Copenhagen Contemporary, Humble and Curious, NREP, Trifolium, Kinraden, Åben Brewery, Gammel Strand

## COLLABORATORS

Pihlmann Architects, Christine Bjerke, Dinesen Lab, Realdania, Victor Boye Julebæk, Gehl People, Dreyers Fond, Marianne Krogh, Artikel København, Studio Atlant, Chrissie Muhr, Alexis Mark, Almenr, Sarah Mullertz, Forthcoming Studio, Reværk Arkitektur, Cobe, Peter Frøge, Studio Kim Lenschow, Studio 0405, MSSR Works, Arda Audio, The Danish Association of Architects



# 360° SERVICES



Archival Studies  
@archival\_studies  
archivalstudies.net