

Archival Studies Practice and Projects 2024

Departure and homecoming: Tradition may constitute a point of departure for creation, but never a home to come back to.

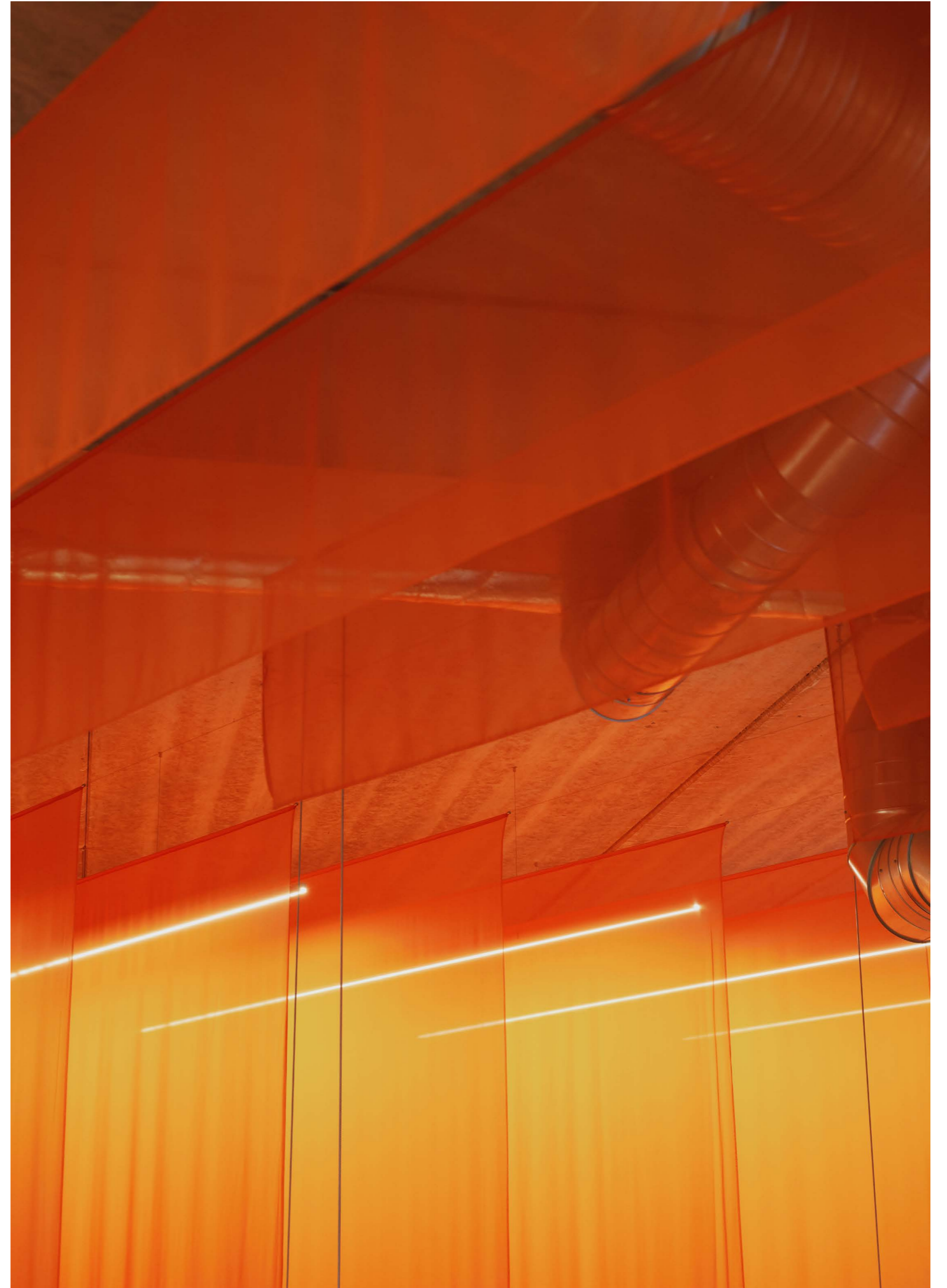
— Kazuo Shinohara

ARCHIVAL STUDIES

Archival Studies is a Copenhagen-based design practice that explores interior architecture for transformation and care of the existing.

We actively engage with a network of partners, collaborating with private, public, and commercial clients, to apply regenerative concepts, flexible building systems, and sensory-rich environments.

Our potential lies in our focus on craftsmanship and production. We strive to inspire new standards for materials and shape a contemporary definition of architecture that addresses the numerous challenges our planet faces today.

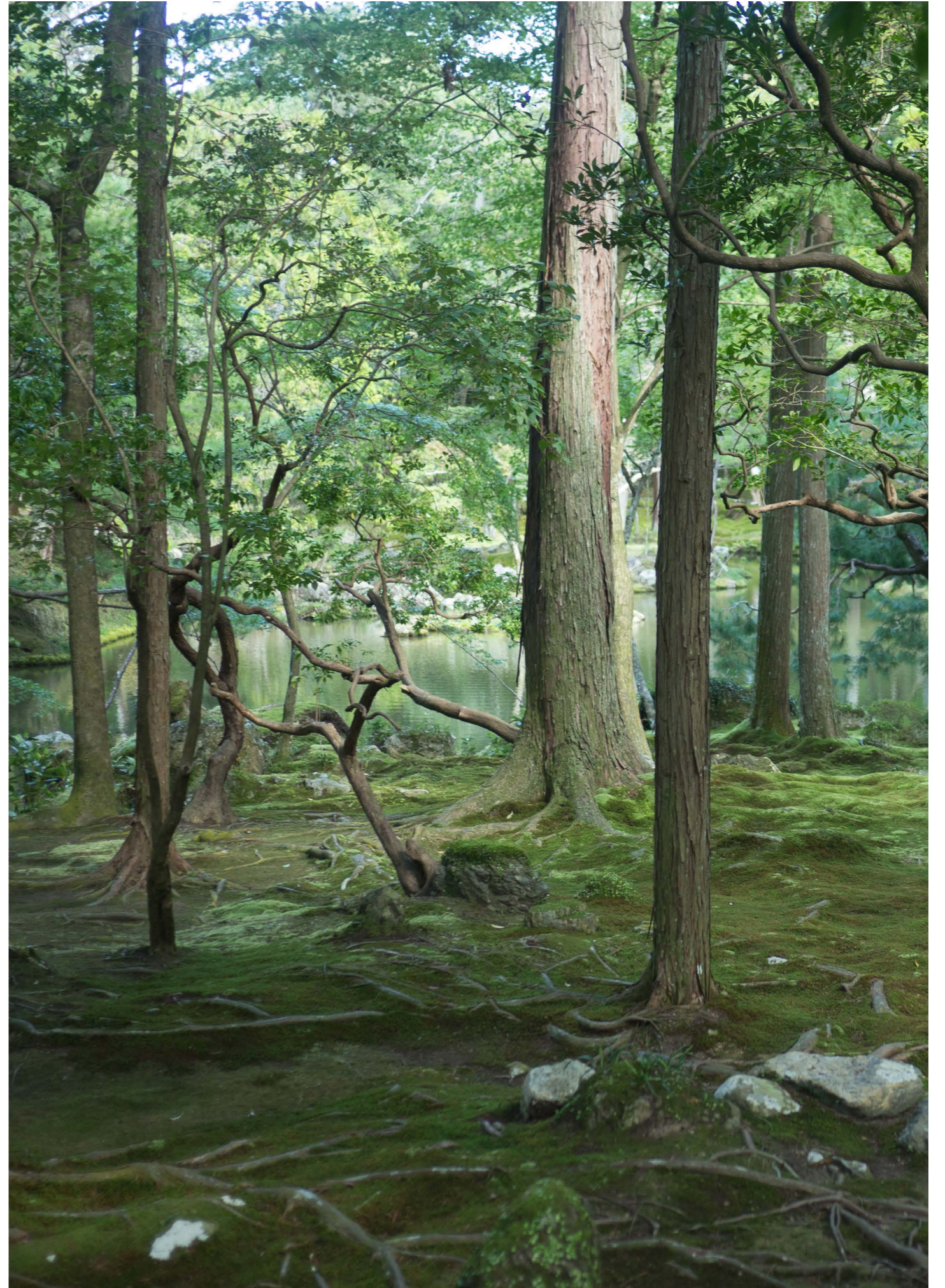


STATEMENT

As our name implies, we begin each process by understanding the already existing. We do this in order to 'design as little as possible', letting patterns of life frame and direct our work.

We begin each project by first understanding the essential qualities of the client, space, or situation that we are working with.

We work with these with the ambition to help places feel truly alive. This aliveness often grows out of patterns of history and culture and these are our roots for transformation and care of the existing.



Selected Projects

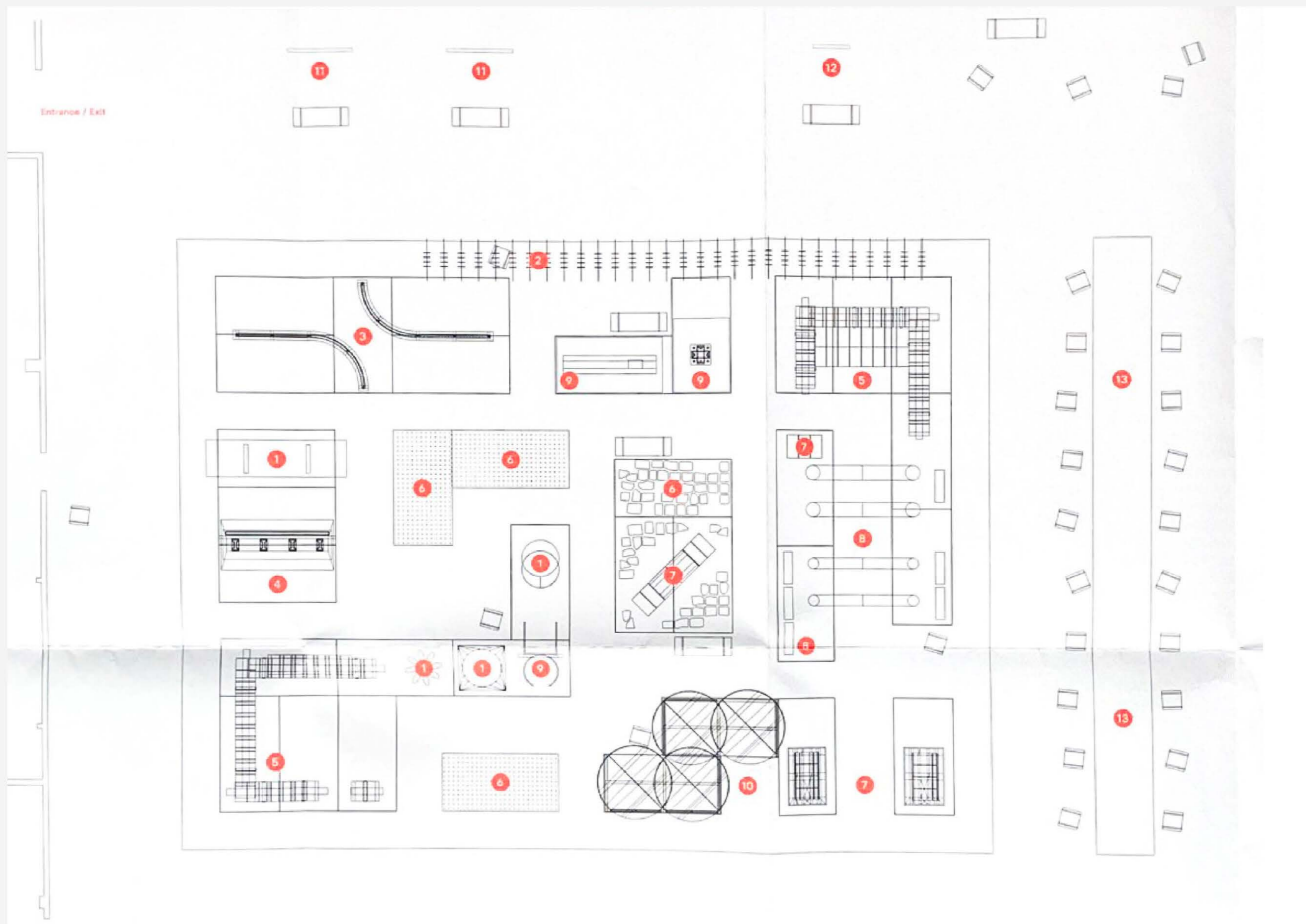
EXHIBITION 05 _ RESET MATERIALS

Archival Studies was commissioned to plan and execute the design of the exhibition Reset Materials, seamlessly connecting the showcased material solutions into a cohesive layout and language. The layout of the space is intentionally designed as a cityscape, mirroring the applications of the featured pieces within the architectural realm. Highways, streets, and pathways wind through the exhibition's high-rises, monuments, arcs, and squares, enabling close engagement with the displayed items and offering a layered landscape that as a window into a potential future.

A crucial element of the design concept was minimizing waste. All materials were maintained at their standard sizes, avoiding the need for cutting or modification. This approach ensured that all exhibition materials could be repurposed once the show concluded.

PROJECT TYPE: Exhibition Design
CLIENT: Akademisk Arkitektforening, Copenhagen Contemporary
LOCATION: Tivoli Gardens, Copenhagen, DK
DATE: 2021
PHOTOGRAPHY: Hampus Berndtson







Archival Studies



@archival_studies

archivalstudies.net

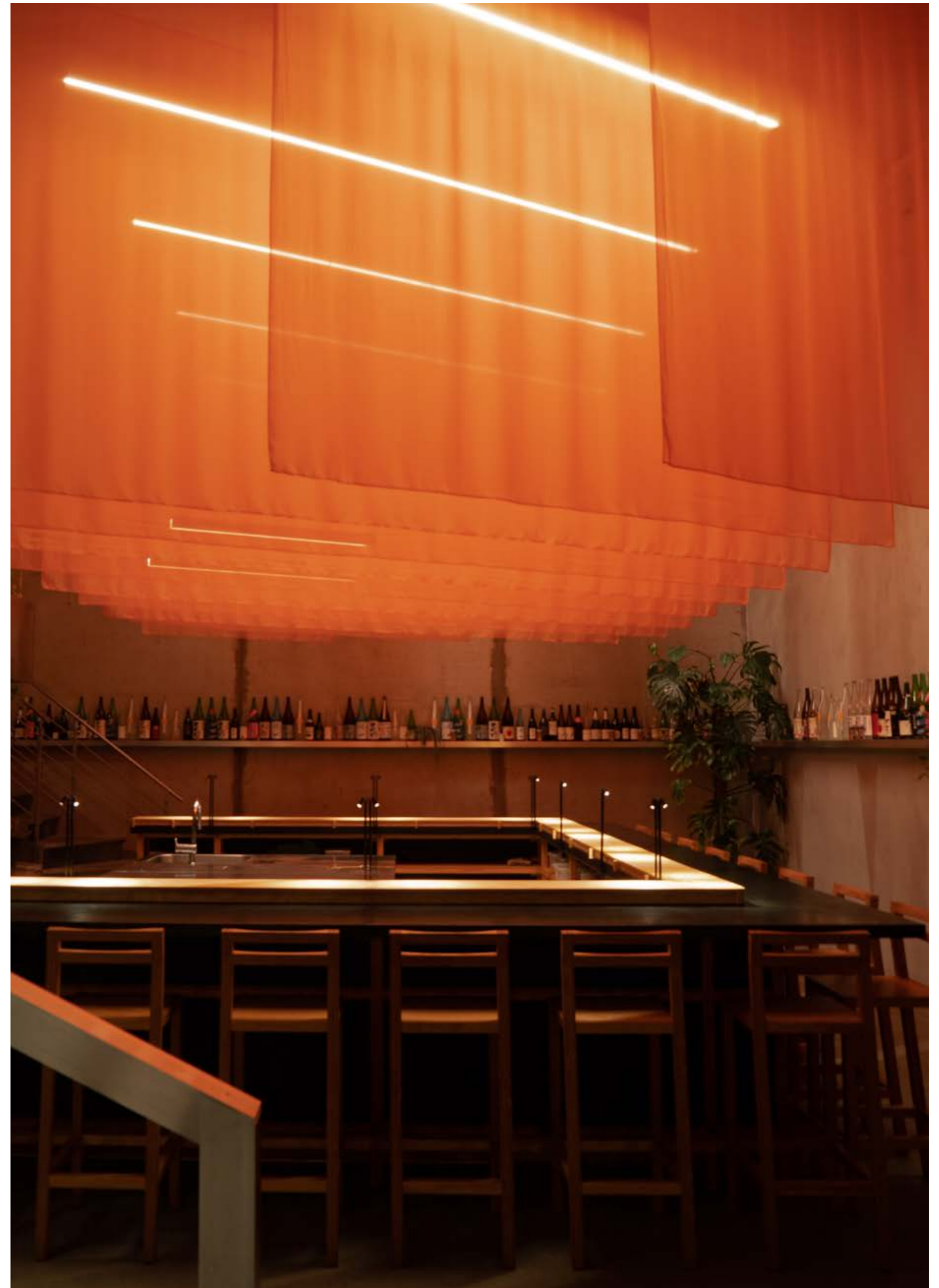


INTERIOR 06 _ KŌNĀ

The interior of Kōnā comprises two distinct spaces. Upon arrival, guests step into the inviting and cozy Izakaya, featuring a gently draped textile ceiling that exudes a tranquil atmosphere. Descending the stairs to the lower floor, a striking transformation unfolds as the expansive Omakase Bar space envelops them.

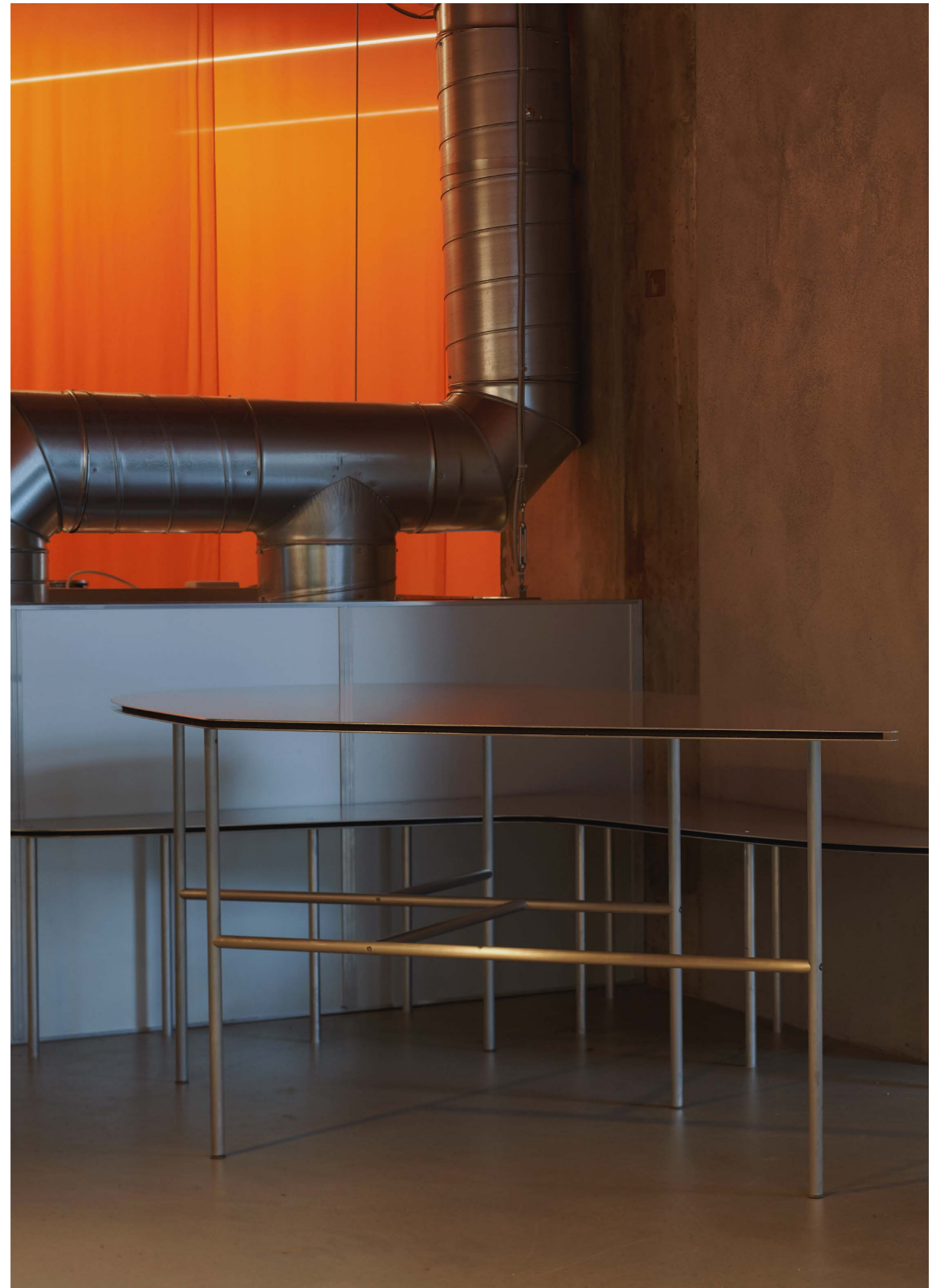
From furnishings and lighting to textiles and wayfinding, each element was thoughtfully designed and impeccably produced in-house.

PROJECT TYPE: Restaurant Interior
CLIENT: Philipp Inreiter and Carlsberg Byen
LOCATION: Copenhagen, DK
DATE: 2020
PHOTOGRAPHY: Niklas Adrian Vindelev / Archival Studies





Archival Studies



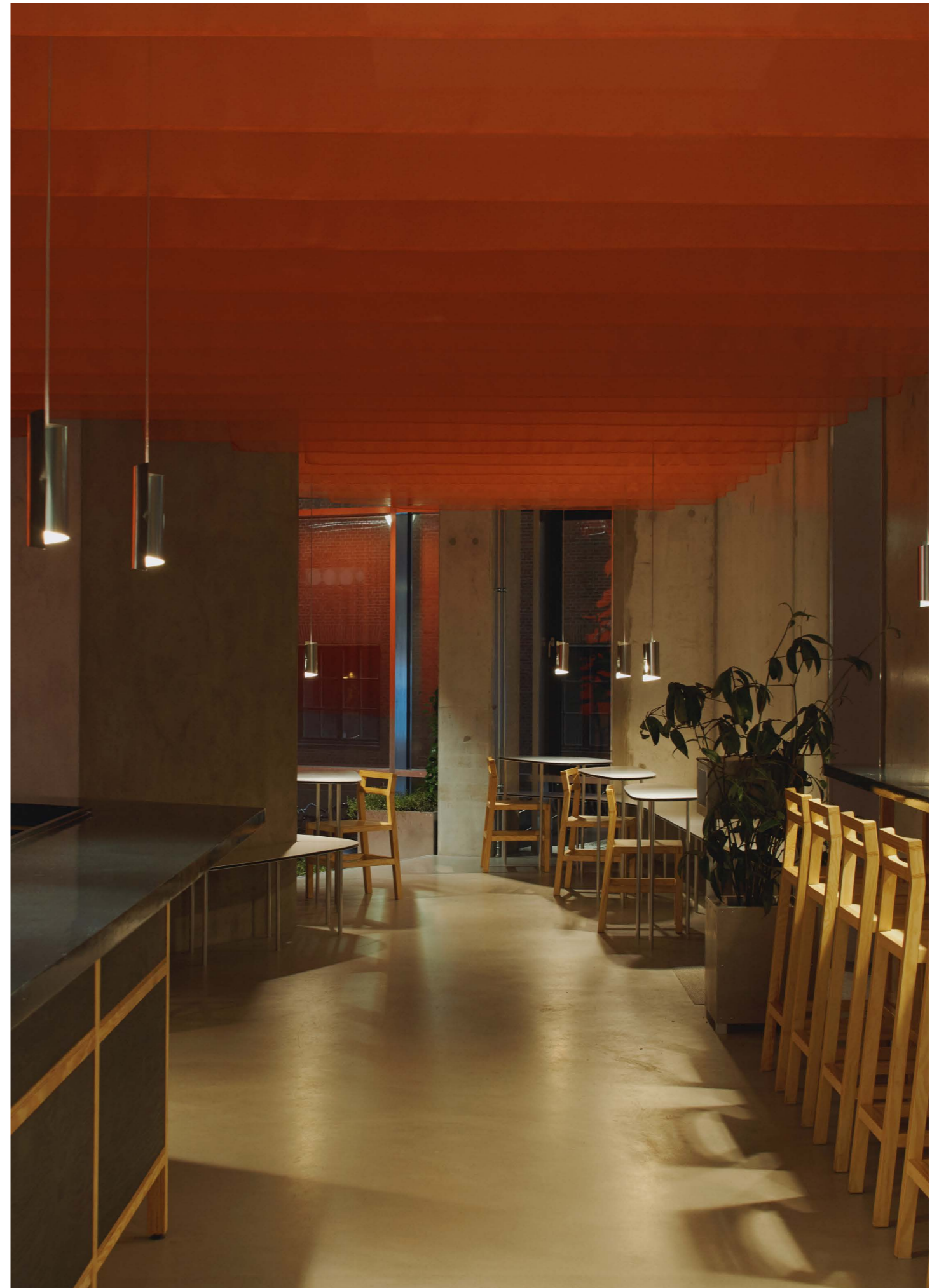
@archival_studies

archivalstudies.net





Archival Studies



@archival_studies

archivalstudies.net

INTERIOR 14 _ GAMMEL STRAND SHOP

As an integral part of Gammel Strand's ongoing remodeling, Archival Studies envisions and rolls out the art center's physical transformation.

Located in a historical building dating back to the 1750s, the spatial redesign is approached with consideration to the architectural heritage, to create a genuine space open for ample opportunities.

The spatial transformation is focused on recovering the original space, utilizing existing resources to make room for a new identity and improved wayfinding. Layers of added interiors were stripped away, making room for the classical architecture to breathe. The restored wooden floorboards and exposed walls unfold the room to an inviting space, that offers the art center a platform to unfold as a lively cultural house.

PROJECT TYPE: Retail, Interior
CLIENT: Gammel Strand
LOCATION: Central Copenhagen, DK
DATE: 2024
PHOTOGRAPHY: Hampus Berndtson

Archival Studies



@archival_studies

archivalstudies.net







Archival Studies



@archival_studies

archivalstudies.net



PAVILION 01 _ SOLEN

Solen is the landmark pavilion for Syd for Solen festival 2024 serving as a point for navigation, gathering, and experience. Drawing direct inspiration from the sun, the design features a simple graphical aesthetic in shape and color softened through the strategic use of textiles and natural light. The pavilion is composed of scaffolding, which, by nature, is a circular and temporary system that allows for disassembly and repurposing. This makes the design reusable for years to come, reinforcing our commitment to minimizing waste.

The pavilion's industrial framework is contrasted with the draping of mesh-like scaffolding textile, which plays with the concept of translucency. This layering of textiles introduces multiple shades of color, creating a lively visual experience. The circle, a simple yet potent symbol, anchors the pavilion's design, welcoming visitors from all angles.

PROJECT TYPE: Pavilion
CLIENT: Humble and Curious
LOCATION: Copenhagen, DK
DATE: 2024
PHOTOGRAPHY: Niklas Adrian Vindelev









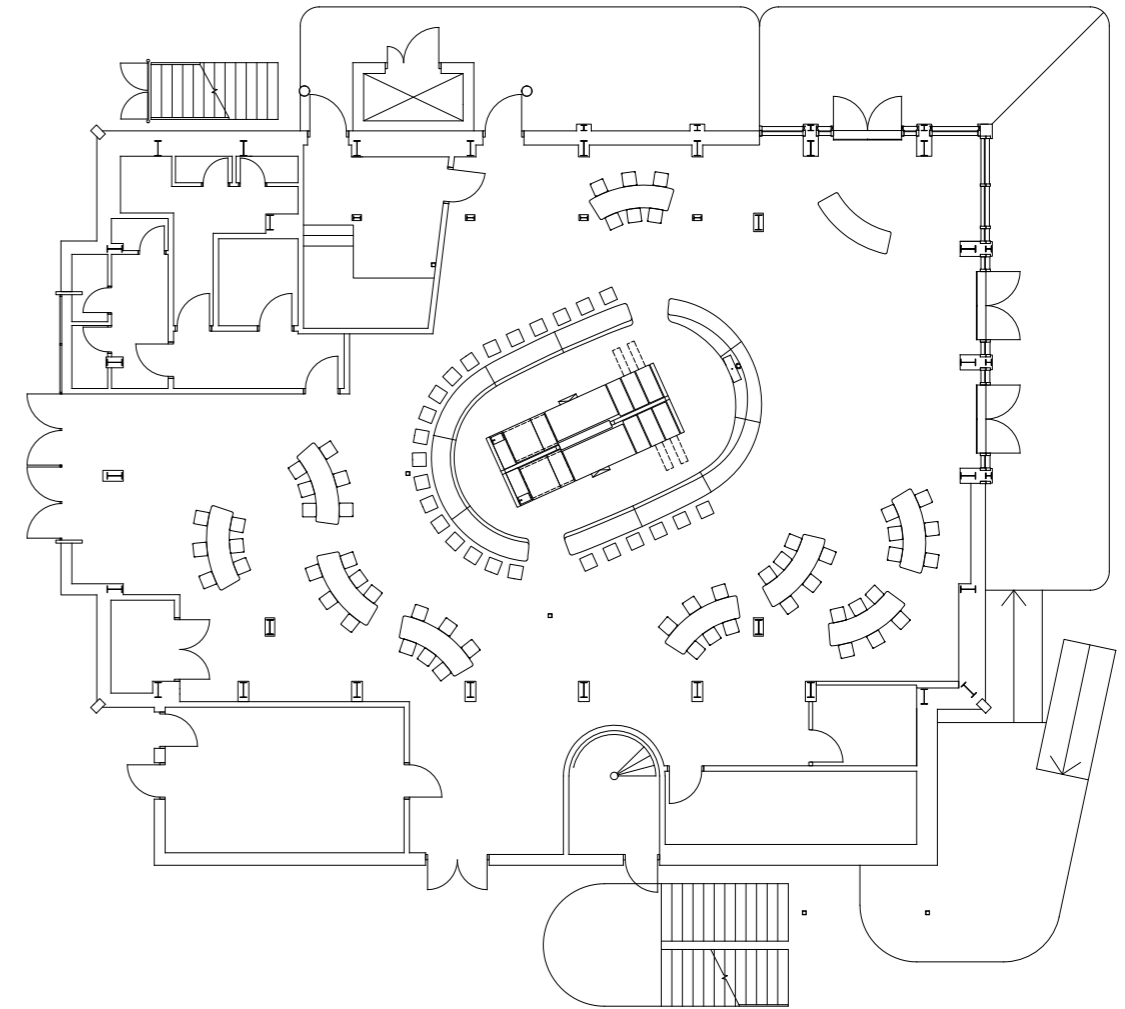
INTERIOR 07 _ GASOLINE GRILL

When considering burger culture, the reminiscent drive-in diners of the Western USA emerge, closely intertwined with the automotive industry. As the automotive sector and infrastructure flourished in the USA, so did the burgeon of burger culture. The utilization of metals, curves, and vibrant illumination within certain Gasoline Grill locales evoked the streamlined, industrial, and pragmatic aesthetic reminiscent of those Western USA diners.

A parallel theme that emerged in our musings was the California light and space art movement, occurring simultaneously. These artists, influenced by the burgeoning American industry, particularly the automotive sector, sought to craft experiences rather than objects. Through the manipulation of light, spatial dimensions, and color, they aimed to impact human perception and to allow people to see the world in new ways.

PROJECT TYPE: Restaurant Interior
CLIENT: Gasoline Grill, Tivoli
LOCATION: Tivoli Gardens, Copenhagen, DK
DATE: 2021
PHOTOGRAPHY: Hampus Berndtson









Archival Studies



@archival_studies

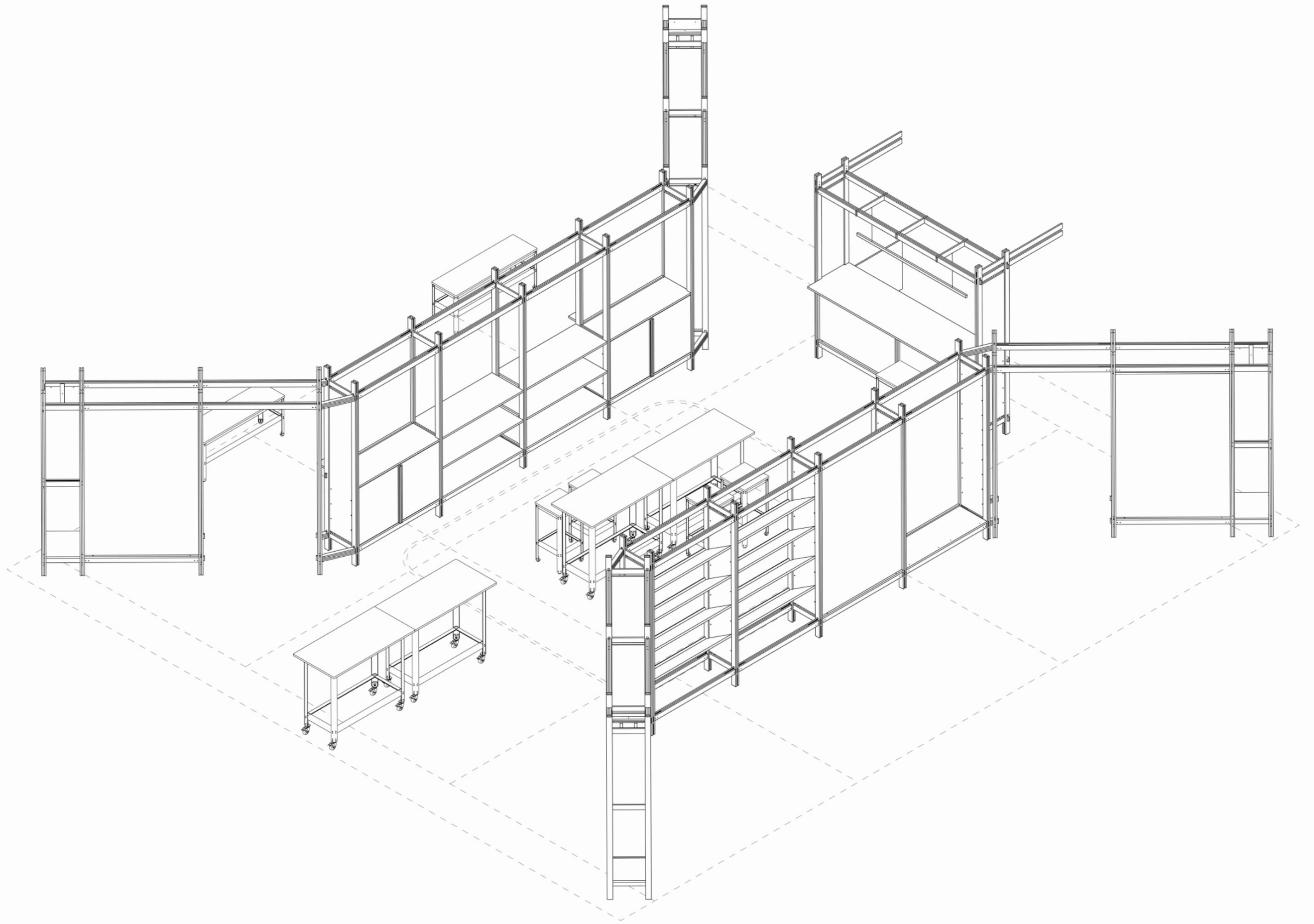
archivalstudies.net

BUILDING SYSTEM _ ROCKFON

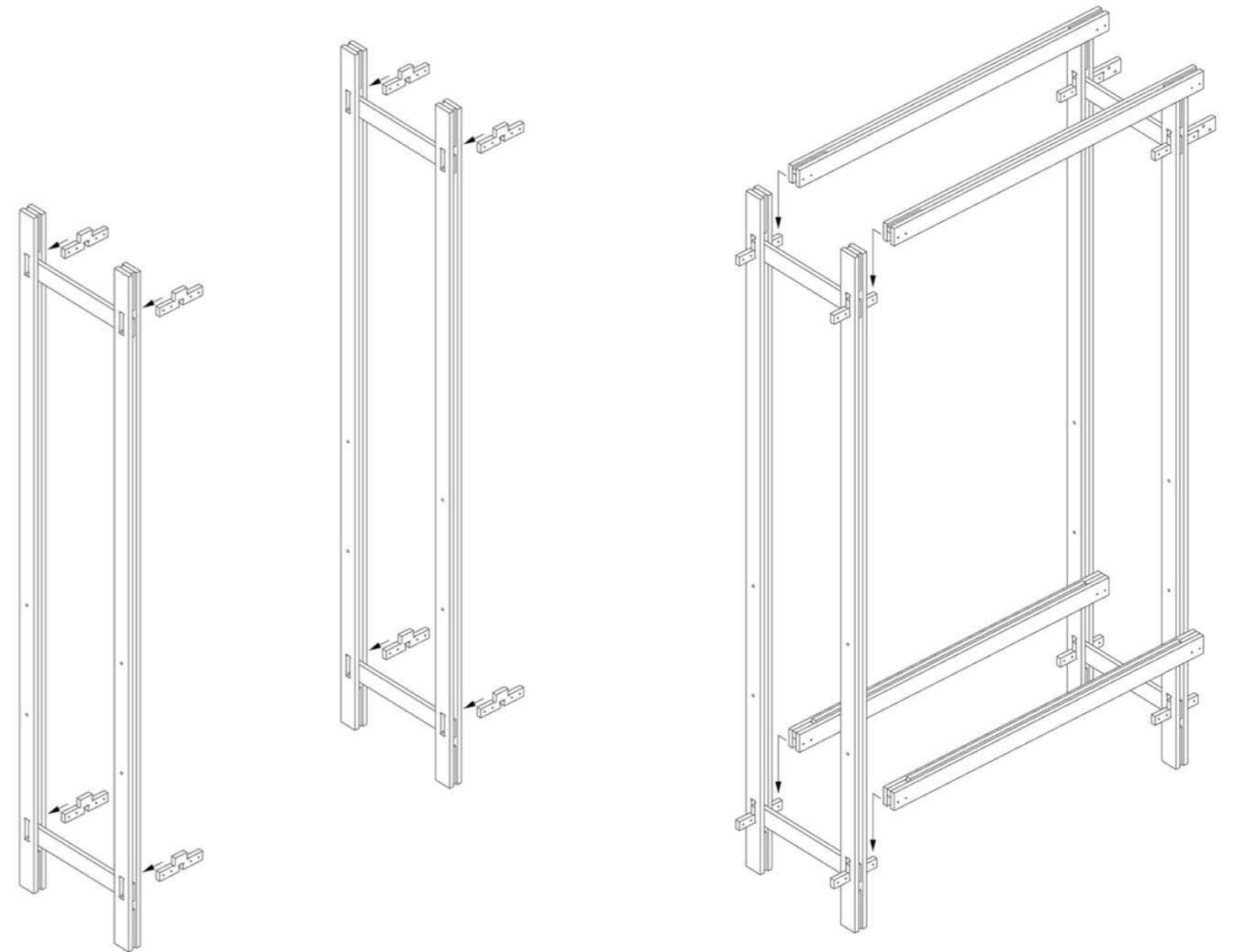
To showcase their new range of design solutions, Rockfon's modular exhibition system was designed to frame and uplift the products on display. The goal was to provide attendees with a memorable sensory experience, allowing them to immerse themselves in Rockfon's range of design acoustics within a unique environment. Following our two companies' akin approaches to environmental consciousness, the structure of CNC-milled and laminated plywood was designed to be taken apart to travel between exhibitions. This approach aims to minimize waste between events and allows the material to gain character and charm over time. The exhibition system was first implemented at Paris' Workspace Expo in 2023, and has since been repurposed for exhibitions in Amsterdam and Malmö.

PROJECT TYPE: Modular Exhibition System
CLIENT: Rockfon
LOCATION: Paris (FR), Amsterdam (NL), Malmö (SE)
DATE: 2023–2024
PHOTOGRAPHY: Studio Brinth











BUILDING 01 _ VORES STED

The communal project Vores Sted has been initiated by Realdania on the occasion of their 25th anniversary. Together with Pihlmann Architects, Cobe, Reværk, Rumgehør, Studio XYZ, Archival Studies has designed four unique meeting places to foster community and sustainability: The Workshop, The Conservatory, The Nature Base, and The Community Roof.

The goal was to create communal spaces with a minimal environmental impact, using recycled, surplus, and biogenic materials. The structures are designed for easy disassembly, ensuring no lasting impact on their sites. By 2026, at least 150 of these meeting places will be established across Denmark, bringing people together in innovative and inspiring ways.

We are honored to be able to contribute to this initiative, promoting local gatherings and strengthening communities.

PROJECT TYPE: Building

CLIENT: Realdania

LOCATION: Denmark

DATE: 2024 - 2026

COLLABORATORS: Pihlmann Architects, Cobe, Reværk, Rumgehør, Studio XYZ

Archival Studies



@archival_studies

archivalstudies.net



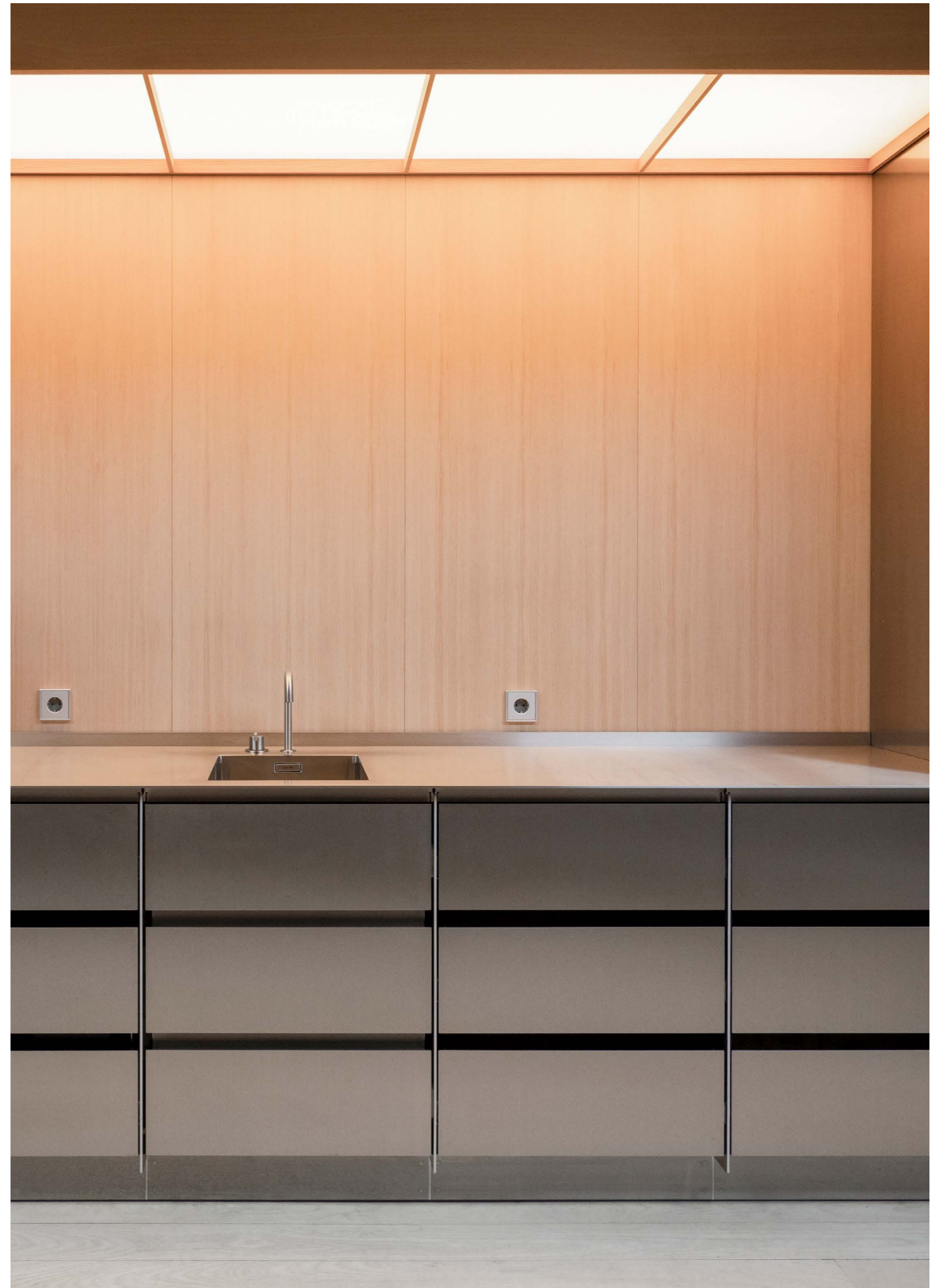


KITCHEN 11 _ NORSE PROJECTS

Set into a niche inside one of Holmen's traditional boat sheds, this beverage kitchen is designed to blend into the calm and creative atmosphere of contemporary lifestyle brand Norse Projects' headquarters. In this historical environment, the aluminium and brushed stainless steel surfaces leave a timeless impression. The reflections of the custom light box paint the space in warm and welcoming tones.

PROJECT TYPE: Kitchen
CLIENT: Norse Projects
LOCATION: Copenhagen, DK
DATE: 2023
PHOTOGRAPHY: Archival Studies

Archival Studies



@archival_studies

archivalstudies.net

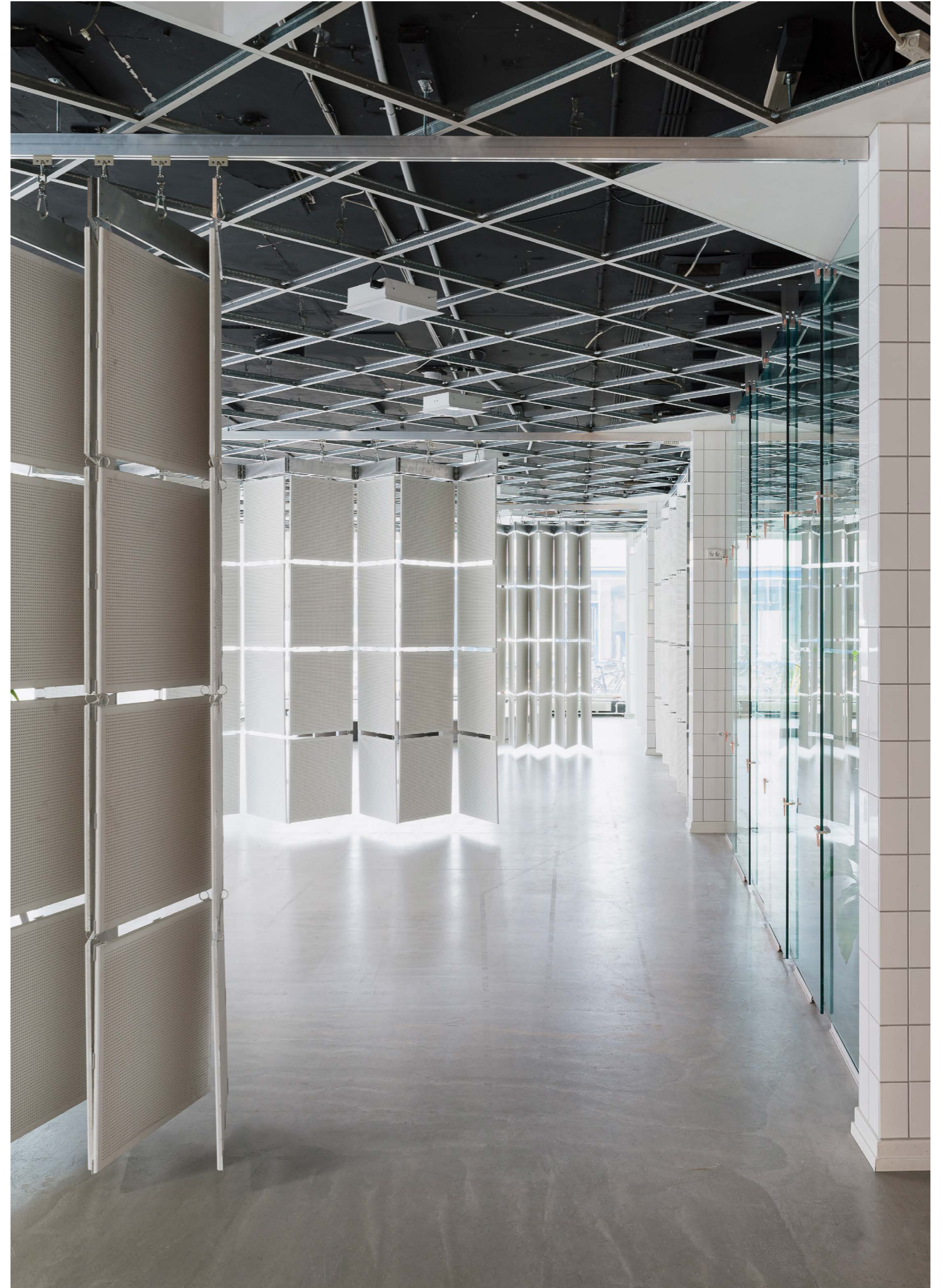




INTERIOR 05 _ ART HUB

The transformation of Art Hub Copenhagen points towards a general path for how recycling can be rethought in architecture. When resources are not consumed, but regenerated into value-creating elements, recycling is no longer a necessary evil, but the very catalyst of form and intention.

PROJECT TYPE: Office Interior
CLIENT: Art Hub Copenhagen
LOCATION: Kødbyen, Copenhagen, DK
DATE: 2020
PHOTOGRAPHY: Hampus Berndtson









Archival Studies



@archival_studies

archivalstudies.net



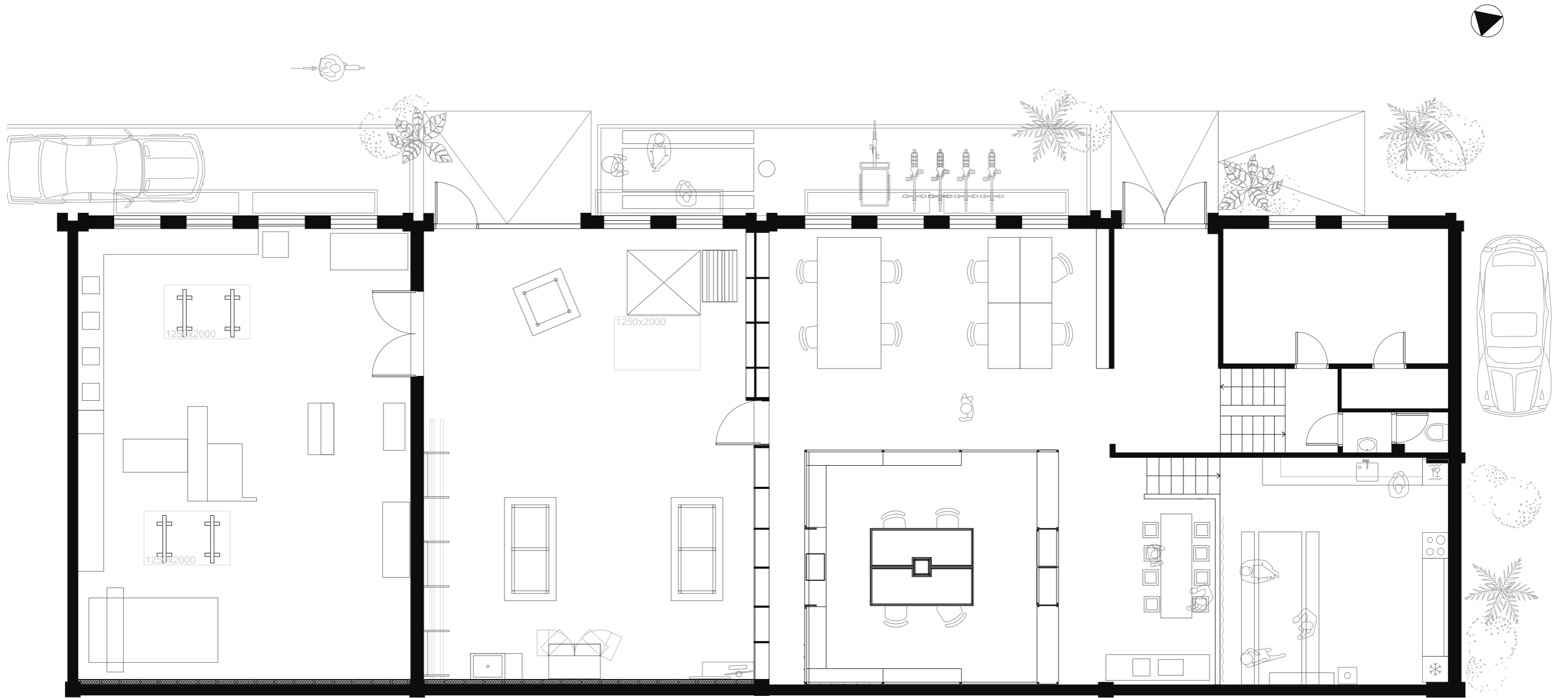
INTERIOR 11 _ VÆRKSTEDVEJ 23

Værkstedvej 23 serves as the heart of our architectural practice. Our studio is meticulously crafted to foster inspiration and facilitate meaningful exchanges. Within its walls, we convene to discuss, sketch, model, draw, design, prototype, produce, share meals, and cultivate collective growth.

The place is alive, a dynamic workshop that remains in perpetual motion, embodying a continuous flow of creativity and activity.

PROJECT TYPE: Office Interior
COLLABORATORS: Dinesen Lab, MSSR Works, Arda Audio
LOCATION: Copenhagen Valby, DK
DATE: 2022
PHOTOGRAPHY: Christian Mayer









Archival Studies



@archival_studies

archivalstudies.net

COMMERCIAL CLIENTS

Rockfon, National Gallery of Denmark, Bikubenfonden Dinesen, Realdania, Ricardo Bofill, Glyptoteket, Philipp Inreiter, D Line, Art Hub Copenhagen, Gammel Strand, Norse Projects, Kinraden, Almenr, Studio Kim Lenschow, Nrep, Space10, Carlsberg Byen, The Danish Association of Architects, Frama, Artikel København, Gasoline Grill, Tivoli Gardens, Soulland, Playdead, Humble and Curious, Refshaleøens Ejendomskontor, Copenhagen Contemporary, Åben Brewery, Trifolium

COLLABORATORS

Pihlmann Architects, Victor Boye Julebæk, Artikel København, Chrissie Muhr, Gehl Architects, Marianne Krogh, Studio Atlant, Dinesen Lab, Rasmus Baes, Åsmund Sollihøgda, Forthcoming Studio, MOS Architects, Almenr, Peter Frøge, Georgina Prittie, Studio Jonas Edvard, Arda Audio, Cobe, Reværk, Rumgehør, Studio XYZ, The Danish Association of Architects, Studio C, Creation Baumann

Archival Studies
@archival_studies
archivalstudies.net