

Archival Studies Practice and Projects 2023

Departure and homecoming: Tradition may constitute a point of departure for creation, but never a home to come back to.

— Kazuo Shinohara

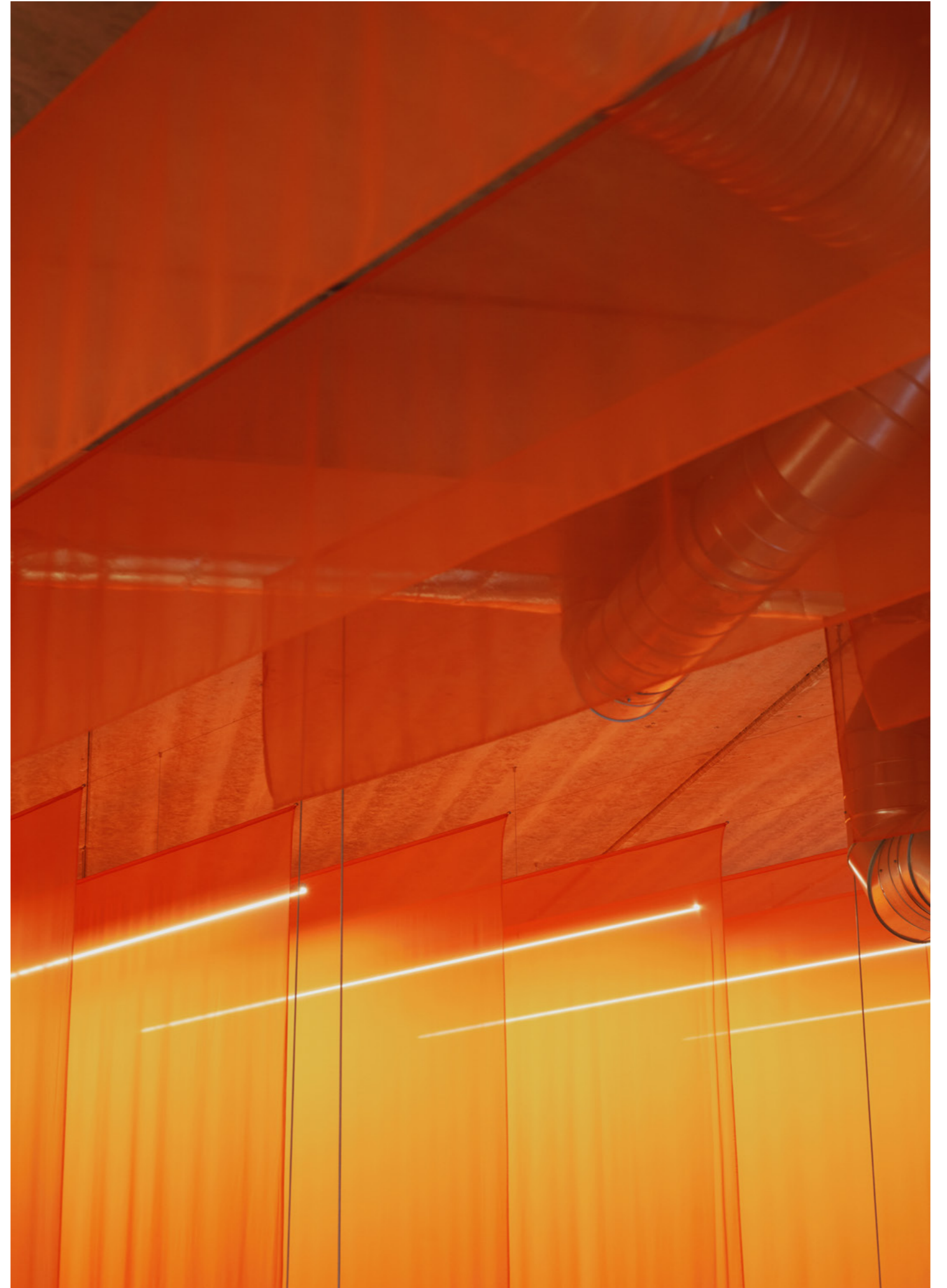


ARCHIVAL STUDIES

Archival Studies is a Copenhagen-based design practice that explores interior architecture for transformation and care of the existing.

We actively engage with a network of partners, collaborating with private, public, and commercial clients, to apply regenerative concepts, flexible building systems, and sensory-rich environments.

Our potential lies in our focus on craftsmanship and production. We strive to inspire new standards for materials and shape a contemporary definition of architecture that addresses the numerous challenges our planet faces today.

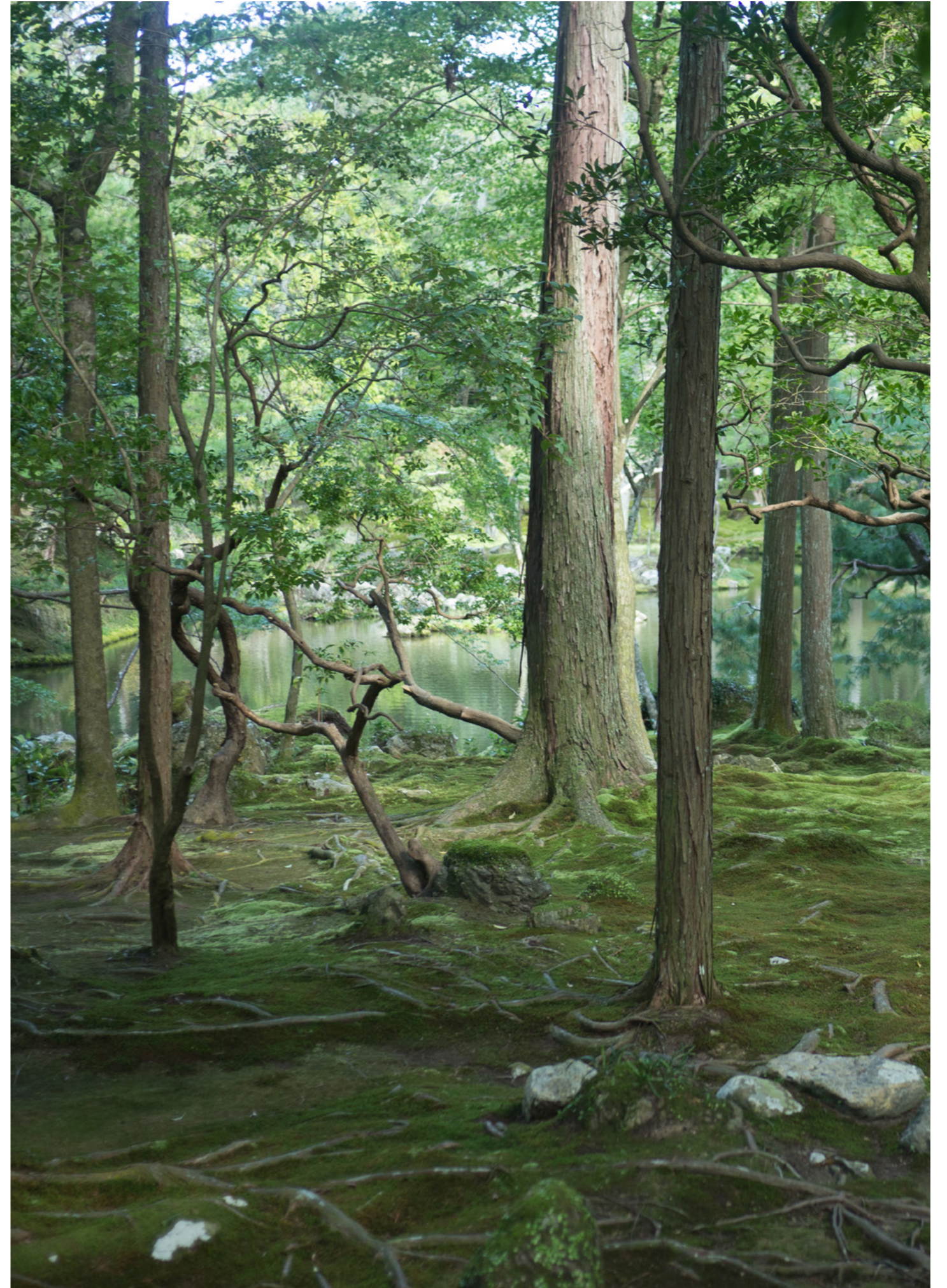


STATEMENT

As our name implies, we begin each process by understanding the already existing. We do this in order to “design as little as possible”, letting patterns of life frame and direct our work.

We begin each process by first understanding the essential qualities of the client, space, or situation that we are working with. We work with these essential qualities with the ambition to help places feel truly alive.

This aliveness often grows out of patterns of history and culture, and, in our opinion, is activated by bringing forth a universality in our work. This universality can be understood as an open-endedness in the design, but also for our praxis to have an open-ended growth: intellectually, spiritually, and aesthetically.



OPPORTUNITIES IN PRODUCTION

Production stands as a foundational pillar within our praxis. To us, a successful production is the unity of raw material, technique, and tectonic quality.

Opportunity found in the sequence of construction, prioritizing assembly for disassembly, in order to create a route for future renovation and repurposing.

Opportunity found in exposing and critiquing the standards of material and production in order to innovate beyond the mono-culture of building.

Opportunity found in a focus on joints. The meetings of materials are core in all building strategies and must be treated likewise. A joint should be exposed and non-permanent.

Opportunity found in local materials and production. Achieving a high quality of detailing economically and with a lower carbon footprint.



ESSENTIAL

All in all, the opportunities in production provide us with the tools to distill projects to their tectonic essentials and to work directly with these elements: The materials, the construction, and the visual form of the built, which converge to constitute a unified whole. As a result, the built then becomes exactly what we see and touch, exactly what we feel beneath our feet.





SCALES

FREE STANDING FURNITURE

Our spatial projects have given life to a line of different furniture typologies that we use as building blocks in our interior projects. For now, we have a metal system and a plywood system.

BUILT IN FURNITURE

Most projects need the infrastructure of storage, kitchens, and bathroom furniture. We provide the full range in most materials.

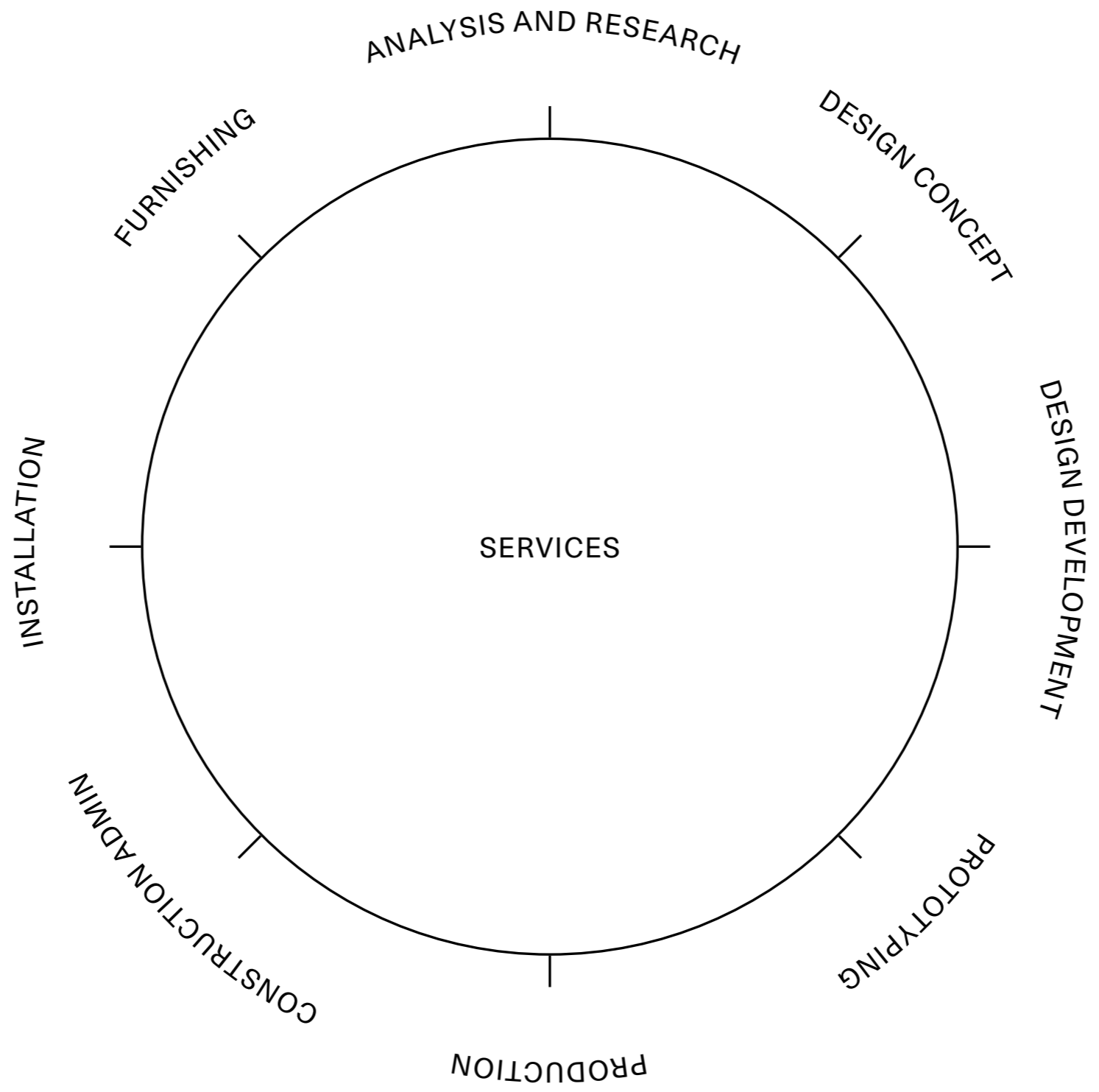
INTERIOR SCALE

Currently, this is our preferred scale to develop work from. We have experiences in restaurants, retail, exhibitions, and offices.

BUILDING SCALE

The work of Archival Studies follows the logic and ambition of architecture. We do not look at the object, but rather through it. We are patient with scaling up, but in time, we will start translating ideas from the smaller scales to the building scale.





CLIENTS

Gehl Architects, Dinesen, Rockfon, National Gallery of Denmark, Ricardo Bofill, Glyptoteket, Philipp Inreiter, Norse Projects, Pihlmann Architects, Kinraden, Almenr, Studio Kim Lenschow, Artikel København, Space10, Carlsberg Byen, Gasoline Grill, Tivoli Gardens, Soulland, Nrep, Art Hub Copenhagen, Refshaleøens Ejendomskontor, Copenhagen Contemporary, Trifolium, The Danish Association of Architects, Åben Brewery

COLLABORATORS

Victor Boye Julebäk, Studio Atlant, Dinesen, Gehl Architects, Georgina Prittie, Forthcoming Studio, MOS Architects, Pihlmann Architects, Almenr, Studio Kim Lenschow, Studio Pneuma, Artikel København, Studio David Thulstrup, Studio Jonas Edvard, Mentze Ottenstein, Rasmus Baes, Space10, Arda Audio, Studio 0405, Klaus Wittrup, Benediktas Burdulis, Christian Vennerstrøm, Toni Copenhagen, Gladsaxe Klip & Buk, The Mindcraft Project

Selected Projects

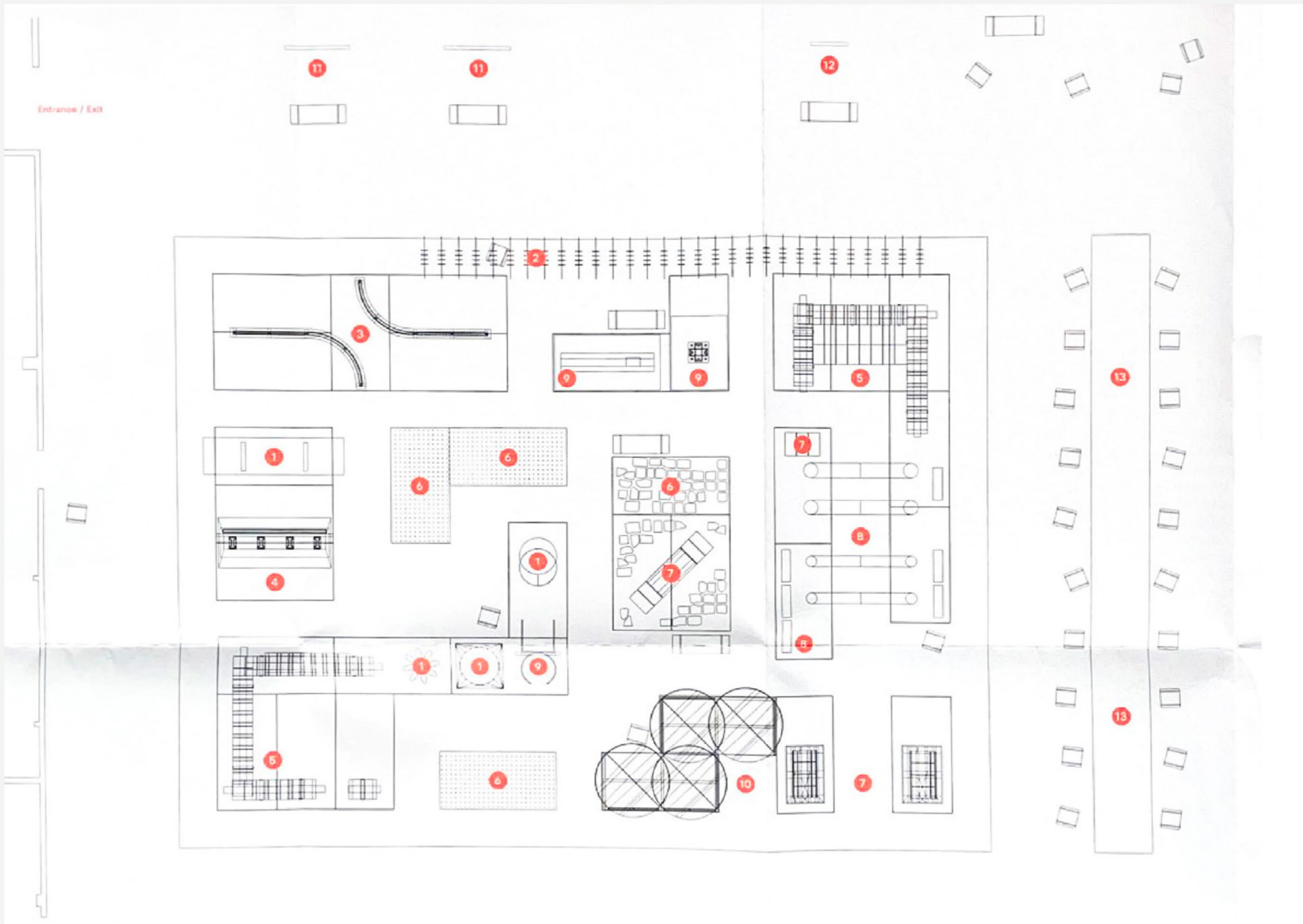
EXHIBITION 05 _ RESET MATERIALS

Archival Studies was commissioned to plan and execute the exhibition design, seamlessly connecting the showcased material solutions into a cohesive layout and language. The layout of the space is intentionally designed as a cityscape, mirroring the applications of the featured pieces within the architectural realm. Highways, streets, and pathways wind through the exhibition's high-rises, monuments, arcs, and squares, enabling close engagement with the displayed items and offering a layered landscape that as a window into a potential future.

An additional crucial element of the design concept was minimizing waste. This was achieved by maintaining all materials at their standard sizes, avoiding the need for cutting or modification. This approach ensures that all exhibition materials can be repurposed once the show concludes. Furthermore, the contemporary materials used in the exhibition

PROJECT TYPE: Exhibition Design
CLIENT: Akademisk Arkitektforening, Copenhagen Contemporary
LOCATION: Tivoli Gardens, Copenhagen, DK
DATE: 2021
PHOTOGRAPHY: Hampus Berndtson









Archival Studies



@archival_studies

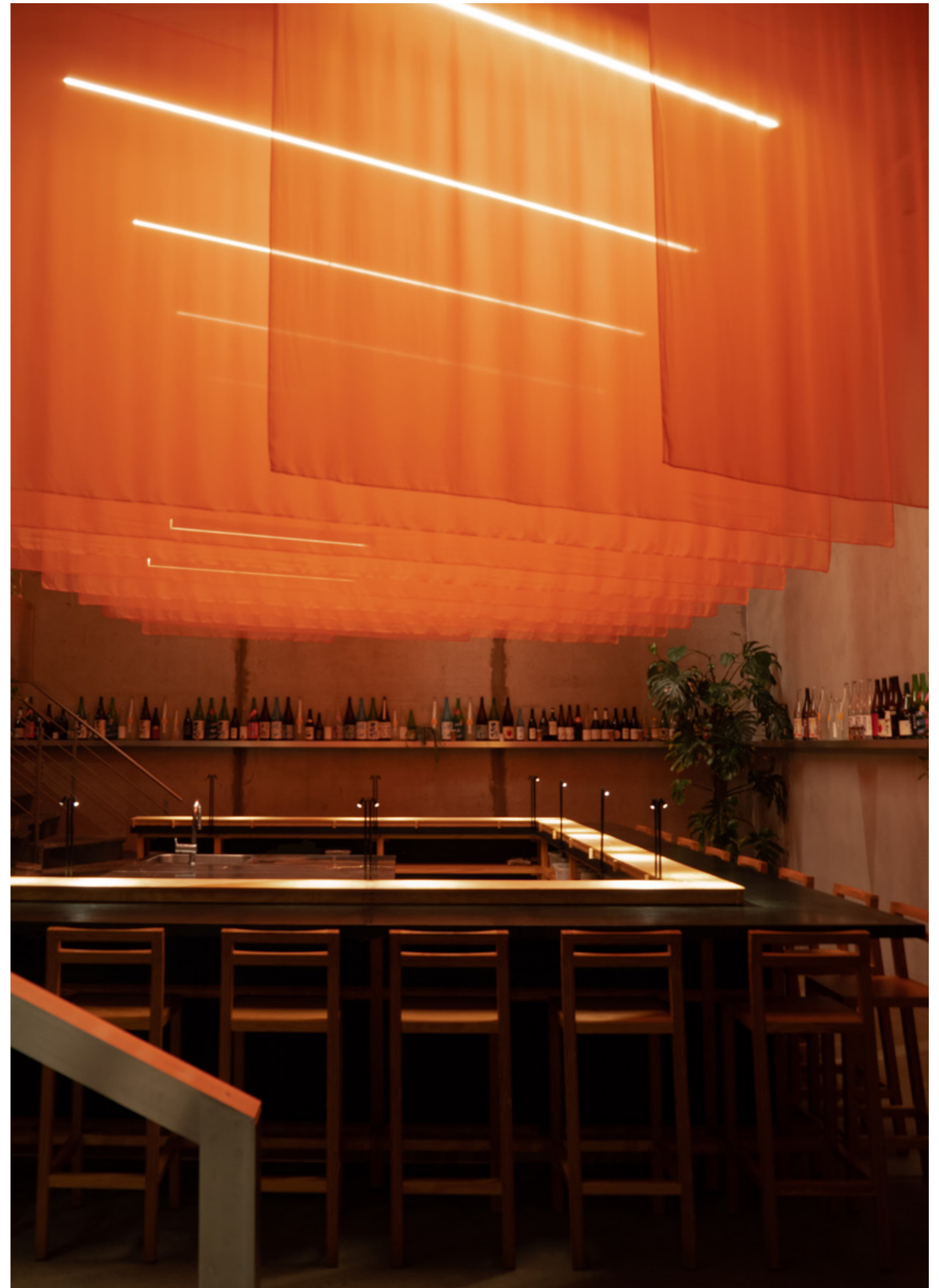
archivalstudies.net

INTERIOR 06 _ KŌNĀ

The interior of Kōnā comprises two distinct spaces. Upon arrival, guests step into the inviting and cozy Izakaya, featuring a gently draped textile ceiling that exudes a tranquil atmosphere. Descending the stairs to the lower floor, a striking transformation unfolds as the expansive Omakase Bar space envelops them.

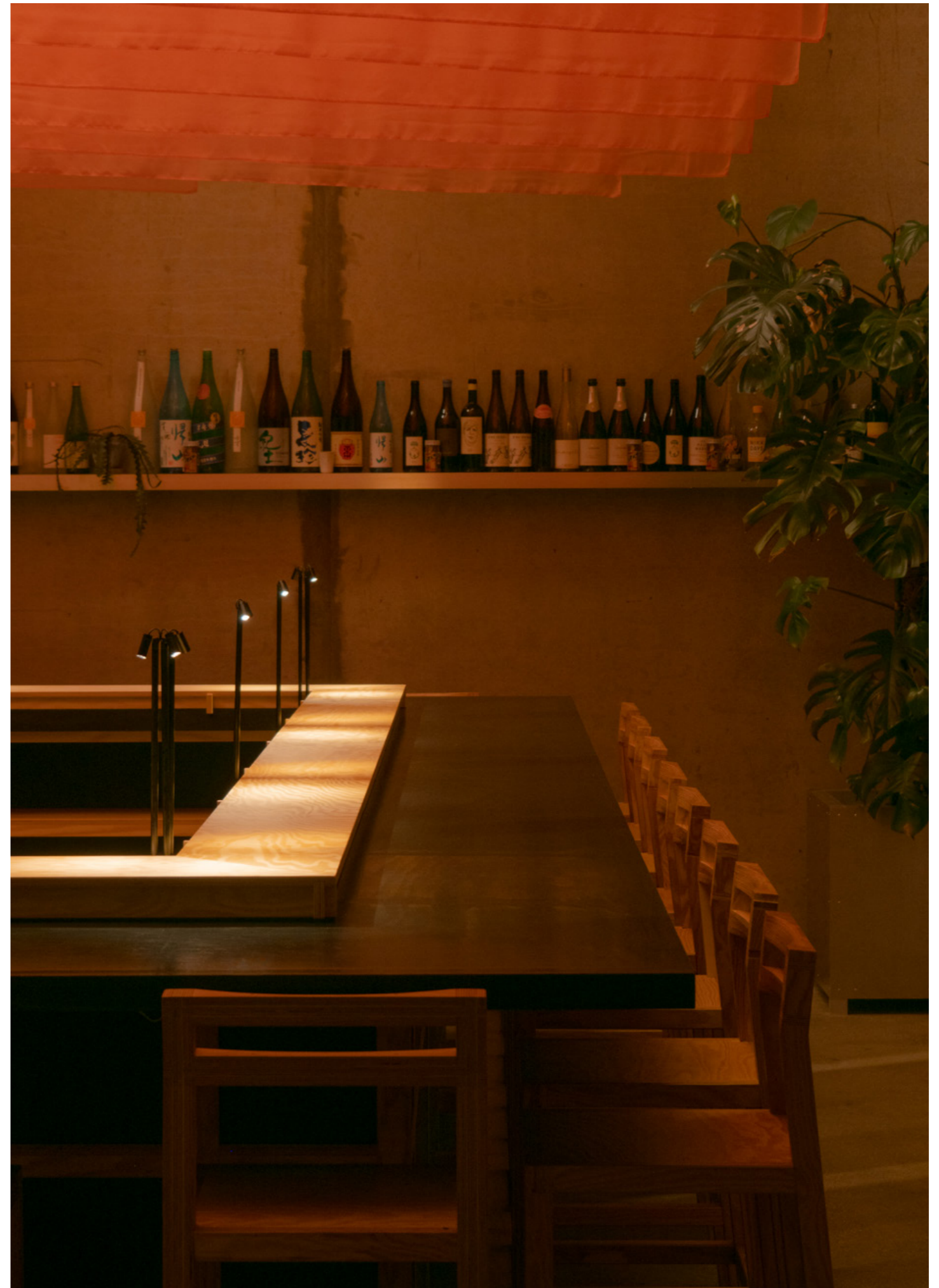
From furnishings and lighting to textiles and wayfinding, each element was thoughtfully designed and impeccably produced in-house.

PROJECT TYPE: Restaurant Interior
CLIENT: Philipp Inreiter and Carlsberg Byen
LOCATION: Copenhagen, DK
DATE: 2020
PHOTOGRAPHY: Niklas Adrian Vindelev / Archival Studies









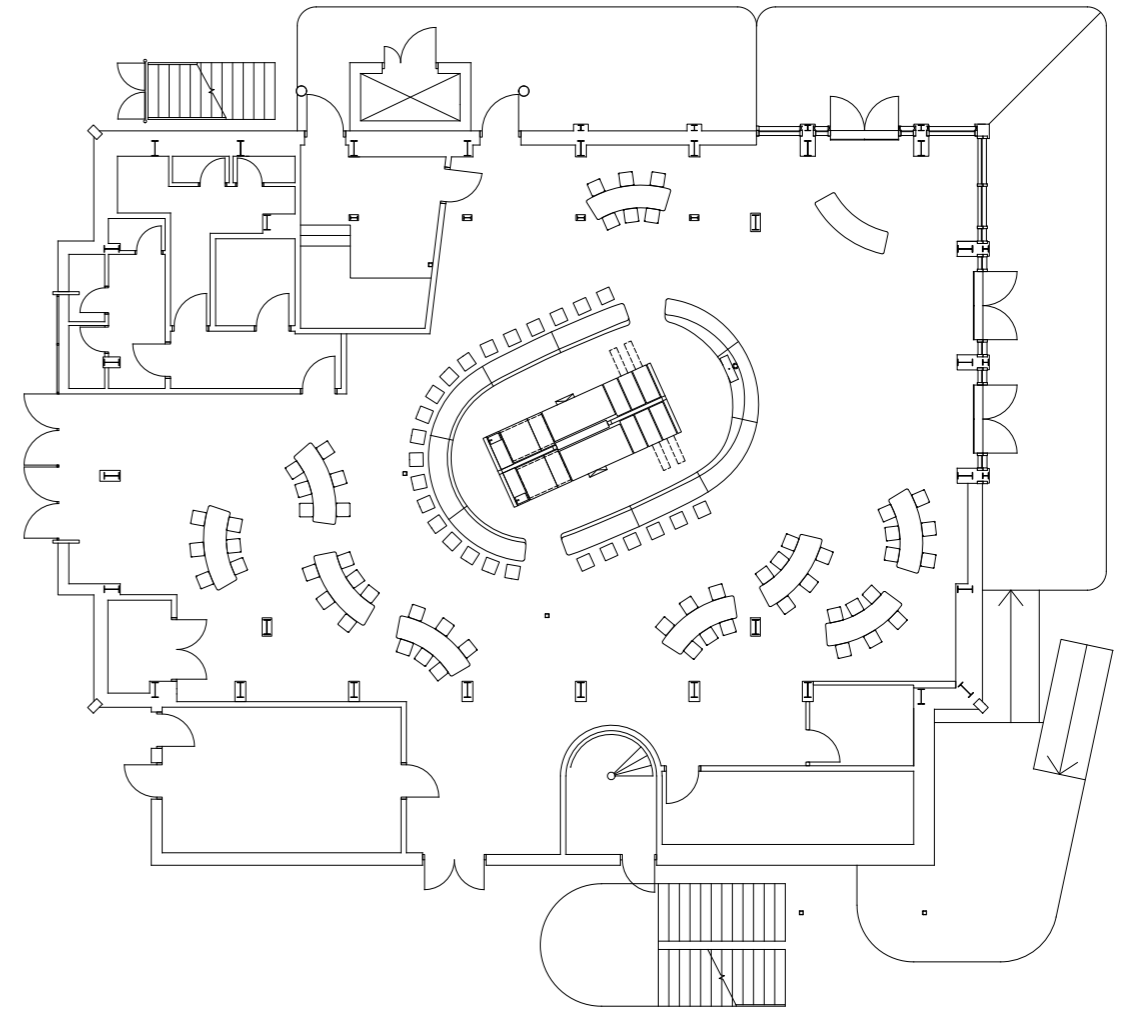
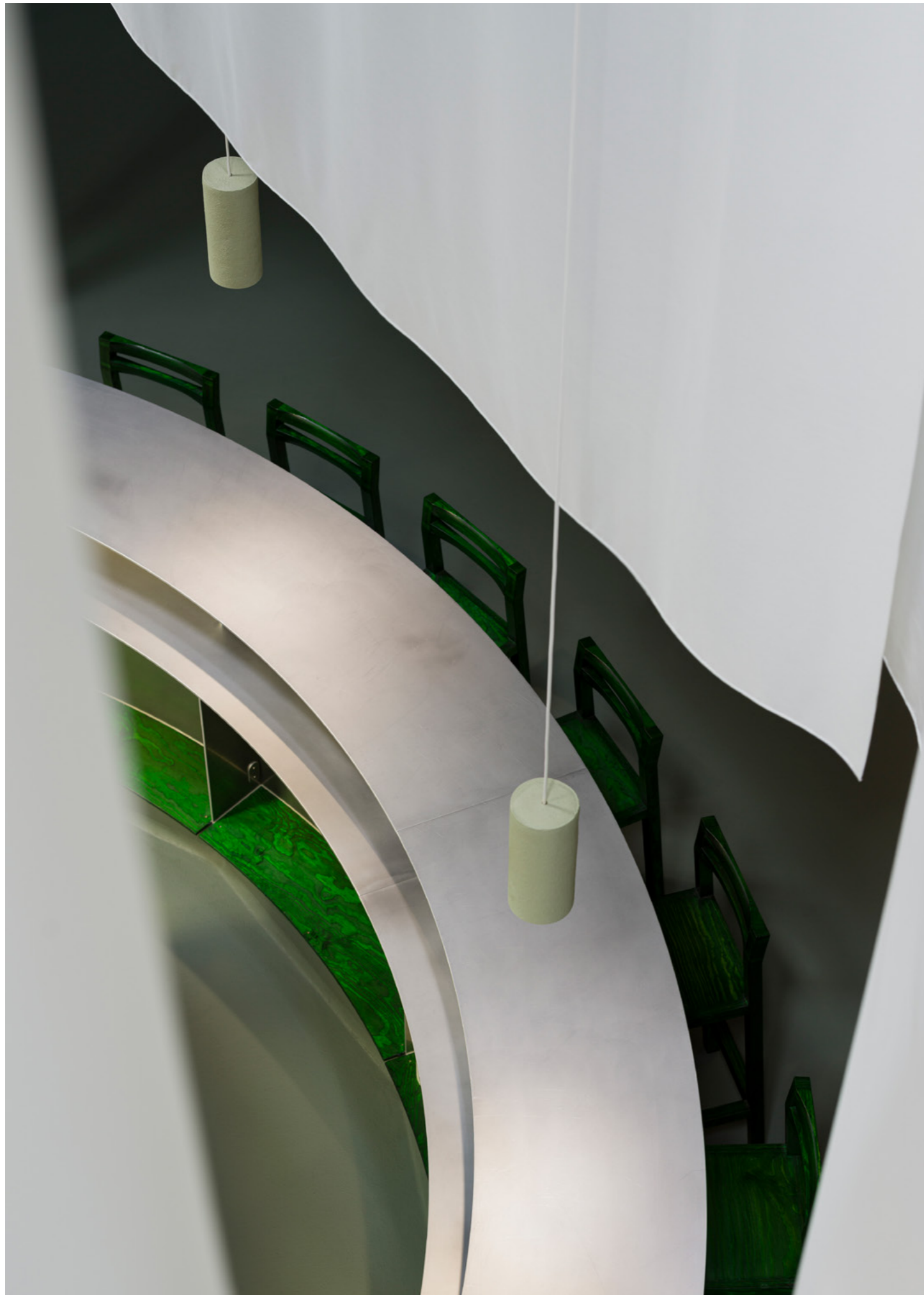
INTERIOR 07 _ GASOLINE GRILL

When considering burger culture, the reminiscent drive-in diners of the Western USA emerge, closely intertwined with the automotive industry. As the automotive sector and infrastructure flourished in the USA, so did the burgeon of burger culture. The utilization of metals, curves, and vibrant illumination within certain Gasoline Grill locales evoked the streamlined, industrial, and pragmatic aesthetic reminiscent of those Western USA diners.

A parallel theme that emerged in our musings was the California light and space art movement, occurring simultaneously. These artists, influenced by the burgeoning American industry, particularly the automotive sector, sought to craft experiences rather than objects. Through the manipulation of light, spatial dimensions, and color, they aimed to impact human perception and to allow people to see the world in new ways.

PROJECT TYPE: Restaurant Interior
CLIENT: Gasoline Grill, Tivoli
LOCATION: Tivoli Gardens, Copenhagen, DK
DATE: 2021
PHOTOGRAPHY: Hampus Berndtson









Archival Studies



@archival_studies

archivalstudies.net

INTERIOR 08 _ SOULLAND SHOWROOM

Drawing inspiration from the contemporary 'white box' gallery space, the interior elements of the Soulland Showroom are restrained, muted, and minimal. The color palette of white and pale grey, coupled with the aluminum and stainless steel surfaces creates a non-obtrusive backdrop for the garments to shine as the true centerpieces of the space.

PROJECT TYPE: Fashion Showroom
CLIENT: Soulland
LOCATION: Frederiksberg, DK
DATE: 2022
PHOTOGRAPHY: Archival Studies

Archival Studies



@archival_studies

archivalstudies.net



Archival Studies



@archival_studies

archivalstudies.net





EXHIBITION 03 _ ROCKFON

To showcase their new range of design solutions, Rockfons modular exhibition system was designed to frame and uplift the products on display. The goal was to provide attendees with a memorable sensory experience, allowing them to immerse themselves in Rockfons range of design acoustics within a unique environment. Following our two companies' akin approaches to environmental consciousness, the structure of CNC-milled and laminated plywood was designed to be taken apart to travel between exhibitions. This approach aims to minimize waste between events and allows the material to gain character and charm over time. The exhibition structure was first implemented at the Workspace Expo in Paris in April 2023.

PROJECT TYPE: Modular Exhibition System
CLIENT: Rockfon
LOCATION: Paris, FR
DATE: 2023
PHOTOGRAPHY: Studio Brinth

Archival Studies



@archival_studies

archivalstudies.net

Sounds Beautiful





Archival Studies



@archival_studies

archivalstudies.net



Archival Studies



@archival_studies

archivalstudies.net



INTERIOR 05 _ART HUB

The transformation of Art Hub Copenhagen points towards a general path for how recycling can be rethought in architecture. When resources are not consumed, but regenerated into value-creating elements, recycling is no longer a necessary evil, but the very catalyst of form and intention.

PROJECT TYPE: Office Interior
CLIENT: Art Hub Copenhagen
LOCATION: Kødbyen, Copenhagen, DK
DATE: 2020
PHOTOGRAPHY: Hampus Berndtson

Archival Studies



@archival_studies

archivalstudies.net









INTERIOR 10 _ KINRADEN SHOWROOM

The showrooms interior elements form a deep Prussian blue backdrop which contrasts with and amplifies the fine jewellery's radiance in the space.

PROJECT TYPE: Jewelry Showroom
CLIENT: Kinraden
LOCATION: Central Copenhagen, DK
DATE: 2022
PHOTOGRAPHY: Archival Studies

Archival Studies



@archival_studies

archivalstudies.net







INTERIOR 11_VÆRKSTEDVEJ 23

Værkstedvej 23 serves as the heart of our architectural practice. Our studio is meticulously crafted to foster inspiration and facilitate meaningful exchanges. Within its walls, we convene to discuss, sketch, model, draw, design, prototype, produce, share meals, and cultivate collective growth.

The place is alive, a dynamic workshop that remains in perpetual motion, embodying a continuous flow of creativity and activity.

PROJECT TYPE: Office Interior
COLLABORATORS: Dinesen Lab, MSSR Works, Arda Audio
LOCATION: Copenhagen Valby, DK
DATE: 2022
PHOTOGRAPHY: Christian Mayer



Archival Studies

Bådehavnsvej 42K,
2450 København SV

PROJECT NAME:
Archival Studies
& Dinesen studio

PROJECT ADDRESS:
Vaerkstedvej 23

NOTES:

DATE
20.06.2022
1 Design proposal
2
3
4
5
6

DATE: 20.06.2022

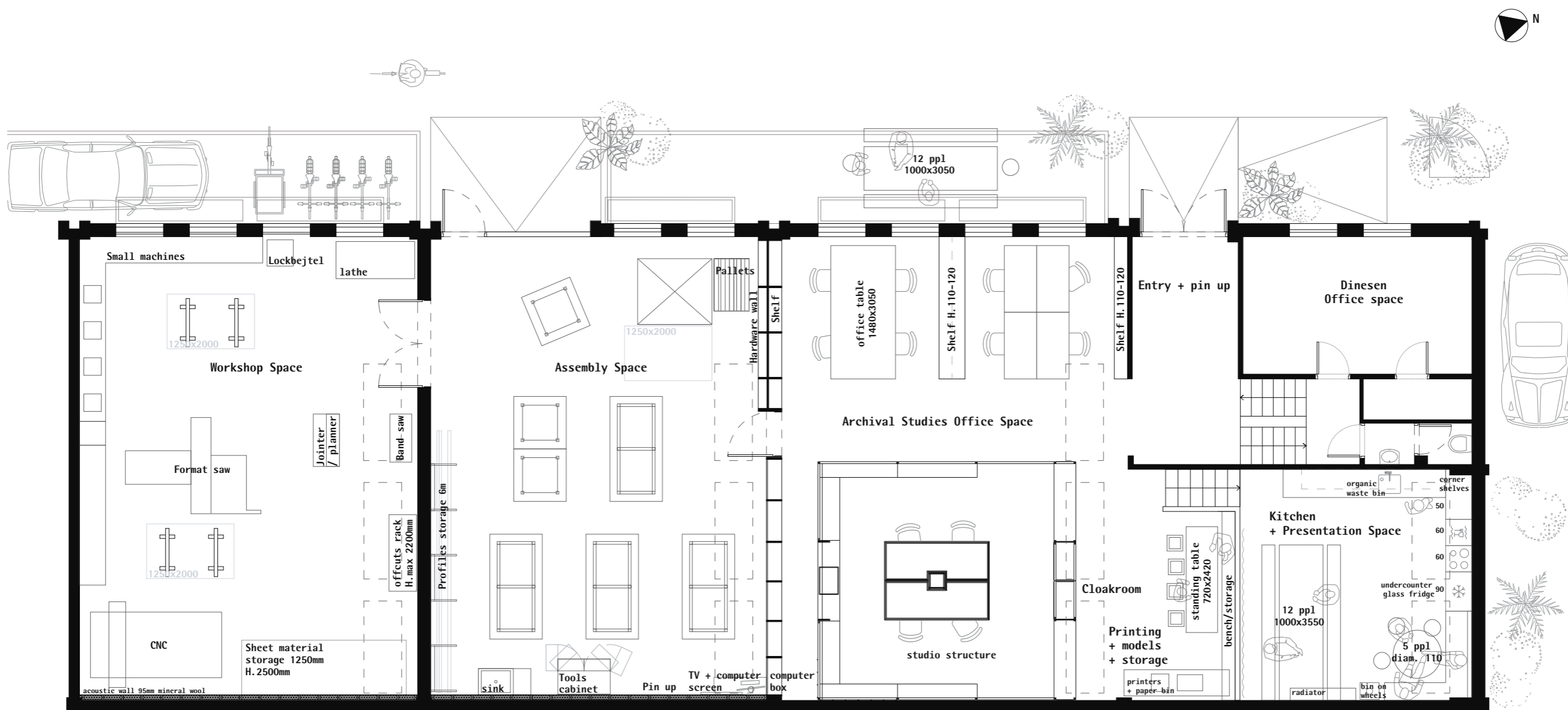
PROJ #: 2214_VV01

DRAWN BY: MDN

GROUND FLOOR

SCALE: 1:100 @A3

P 1







Archival Studies



@archival_studies

archivalstudies.net

Archival Studies
@archival_studies
archivalstudies.net